

Product Name: MIA Rabbit Polyclonal Antibody
Catalog #: APRab13881



Summary

Production Name	MIA Rabbit Polyclonal Antibody
Description	Rabbit Polyclonal Antibody
Host	Rabbit
Application	IHC,ELISA
Reactivity	Human,Mouse,Rat

Performance

Conjugation	Unconjugated
Modification	Unmodified
Isotype	IgG
Clonality	Polyclonal
Form	Liquid
Storage	Store at 4°C short term. Aliquot and store at -20°C long term. Avoid freeze/thaw cycles.
Buffer	Liquid in PBS containing 50% glycerol, 0.5% BSA and 0.02% New type preservative N.
Purification	Affinity purification

Immunogen

Gene Name	MIA
Alternative Names	MIA; Melanoma-derived growth regulatory protein; Melanoma inhibitory activity protein
Gene ID	8190.0
SwissProt ID	Q16674.The antiserum was produced against synthesized peptide derived from human MIA. AA range:82-131

Application

Dilution Ratio	IHC 1:100-1:300 ELISA: 1:40000
Molecular Weight	

Background

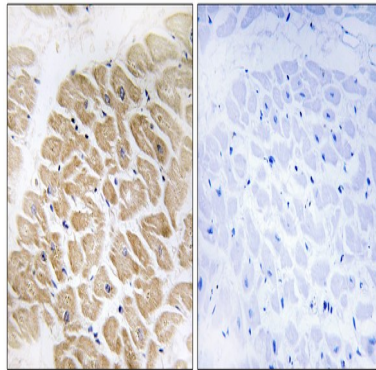
Product Name: MIA Rabbit Polyclonal Antibody
Catalog #: APRab13881



function:Elicits growth inhibition on melanoma cells in vitro as well as some other neuroectodermal tumors, including gliomas.,PTM:May possess two intramolecular disulfide bonds.,similarity:Belongs to the MIA/OTOR family.,similarity:Contains 1 SH3 domain.,tissue specificity:All malignant melanoma cell lines tested and infrequently in glioma cell lines.,function:Elicits growth inhibition on melanoma cells in vitro as well as some other neuroectodermal tumors, including gliomas.,PTM:May possess two intramolecular disulfide bonds.,similarity:Belongs to the MIA/OTOR family.,similarity:Contains 1 SH3 domain.,tissue specificity:All malignant melanoma cell lines tested and infrequently in glioma cell lines.,

Research Area

Image Data



Immunohistochemistry analysis of paraffin-embedded human heart tissue, using MIA Antibody. The picture on the right is blocked with the synthesized peptide.

Note

For research use only.