

Summary

Production Name	MFN1 Rabbit Polyclonal Antibody
Description	Rabbit Polyclonal Antibody
Host	Rabbit
Application	WB
Reactivity	Human,Mouse,Rat

Performance

Conjugation	Unconjugated
Modification	Unmodified
Isotype	IgG
Clonality	Polyclonal
Form	Liquid
Storage	Store at 4°C short term. Aliquot and store at -20°C long term. Avoid freeze/thaw cycles.
Buffer	Liquid in PBS containing 50% glycerol, 0.5% BSA and 0.12% New type preservative N.
Purification	Affinity purification

Immunogen

Gene Name	MFN1
Alternative Names	Mitofusin-1 (EC 3.6.5.-) (Fzo homolog) (Transmembrane GTPase MFN1)
Gene ID	55669.0
SwissProt ID	Q8IWA4.Synthesized peptide derived from human MFN1 AA range: 163-213

Application

Dilution Ratio	WB 1:500-2000
Molecular Weight	85kD

Background

The protein encoded by this gene is a mediator of mitochondrial fusion. This protein and mitofusin 2 are homologs of the Drosophila protein fuzzy onion (Fzo). They are mitochondrial membrane proteins that interact with each other to facilitate

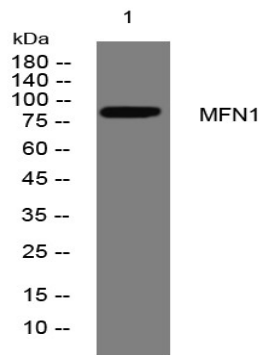
Product Name: MFN1 Rabbit Polyclonal Antibody
Catalog #: APRab13849



mitochondrial targeting. [provided by RefSeq, Jul 2008],catalytic activity:GTP + H(2)O = GDP + phosphate.,function:Essential transmembrane GTPase, which mediates mitochondrial fusion. Fusion of mitochondria occurs in many cell types and constitutes an important step in mitochondria morphology, which is balanced between fusion and fission. MFN1 acts independently of the cytoskeleton. Overexpression induces the formation of mitochondrial networks.,similarity:Belongs to the mitofusin family.,subunit:Forms homomultimers and heteromultimers with MFN2. Multimerization, which is probably mediated by the coiled coil region, may play an essential role in mitochondrion fusion (By similarity). Participates in a high molecular weight multiprotein complex.,tissue specificity:Ubiquitous. Expressed at slightly higher level in kidney and heart. Isoform 2 may be overexpressed in some tumors, such as lung cancers.,

Research Area

Image Data



Western blot analysis of lysates from HCT116 cells, primary antibody was diluted at 1:1000, 4° over night

Note

For research use only.