

Summary

Production Name	MELK Rabbit Polyclonal Antibody
Description	Rabbit Polyclonal Antibody
Host	Rabbit
Application	WB
Reactivity	Human,Rat,Mouse

Performance

Conjugation	Unconjugated
Modification	Unmodified
Isotype	IgG
Clonality	Polyclonal
Form	Liquid
Storage	Store at 4°C short term. Aliquot and store at -20°C long term. Avoid freeze/thaw cycles.
Buffer	Liquid in PBS containing 50% glycerol, 0.5% BSA and 0.02% New type preservative N.
Purification	Affinity purification

Immunogen

Gene Name	MELK
Alternative Names	MELK; KIAA0175; Maternal embryonic leucine zipper kinase; hMELK; Protein kinase Eg3; pEg3 kinase; Protein kinase PK38; hPK38; Tyrosine-protein kinase MELK
Gene ID	9833.0
SwissProt ID	Q14680.The antiserum was produced against synthesized peptide derived from human MELK. AA range:431-480

Application

Dilution Ratio	WB 1:500-1:2000. ELISA: 1:10000.
Molecular Weight	75kD

Background

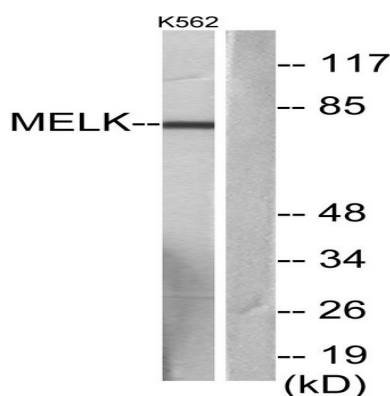
Product Name: MELK Rabbit Polyclonal Antibody
Catalog #: APRab13817



catalytic activity:ATP + a protein = ADP + a phosphoprotein.,function:Phosphorylates ZNF622 and may contribute to its redirection to the nucleus. May be involved in the inhibition of spliceosome assembly during mitosis.,PTM:Autophosphorylated. Thr-478 phosphorylation during mitosis promotes interaction with PPP1R8.,similarity:Belongs to the protein kinase superfamily.,similarity:Belongs to the protein kinase superfamily. CAMK Ser/Thr protein kinase family. SNF1 subfamily.,similarity:Contains 1 KA1 (kinase-associated) domain.,similarity:Contains 1 protein kinase domain.,subunit:Interacts with ZNF622 and PPP1R8.,tissue specificity:Expressed in placenta, kidney, thymus, testis, ovary and intestine.,catalytic activity:ATP + a protein = ADP + a phosphoprotein.,function:Phosphorylates ZNF622 and may contribute to its redirection to the nucleus. May be involved in the inhibition of spliceosome assembly during mitosis.,PTM:Autophosphorylated. Thr-478 phosphorylation during mitosis promotes interaction with PPP1R8.,similarity:Belongs to the protein kinase superfamily.,similarity:Belongs to the protein kinase superfamily. CAMK Ser/Thr protein kinase family. SNF1 subfamily.,similarity:Contains 1 KA1 (kinase-associated) domain.,similarity:Contains 1 protein kinase domain.,subunit:Interacts with ZNF622 and PPP1R8.,tissue specificity:Expressed in placenta, kidney, thymus, testis, ovary and intestine.,

Research Area

Image Data



Western blot analysis of lysates from K562 cells, using MELK Antibody. The lane on the right is blocked with the synthesized peptide.

Note

For research use only.