

Summary

Production Name	Melan-A Rabbit Polyclonal Antibody
Description	Rabbit Polyclonal Antibody
Host	Rabbit
Application	IHC, WB, ELISA
Reactivity	Human, Rat, Mouse

Performance

Conjugation	Unconjugated
Modification	Unmodified
Isotype	IgG
Clonality	Polyclonal
Form	Liquid
Storage	Store at 4°C short term. Aliquot and store at -20°C long term. Avoid freeze/thaw cycles.
Buffer	Liquid in PBS containing 50% glycerol, 0.5% BSA and 0.02% New type preservative N.
Purification	Affinity purification

Immunogen

Gene Name	MLANA
Alternative Names	MLANA; MART1; Melanoma antigen recognized by T-cells 1; MART-1; Antigen LB39-AA; Antigen SK29-AA; Protein Melan-A
Gene ID	2315.0
SwissProt ID	Q16655. The antiserum was produced against synthesized peptide derived from human MART-1. AA range:41-90

Application

Dilution Ratio	WB 1:500 - 1:2000. IHC 1:100 - 1:300. ELISA: 1:40000..
Molecular Weight	15kD

Product Name: Melan-A Rabbit Polyclonal Antibody
Catalog #: APRab13814

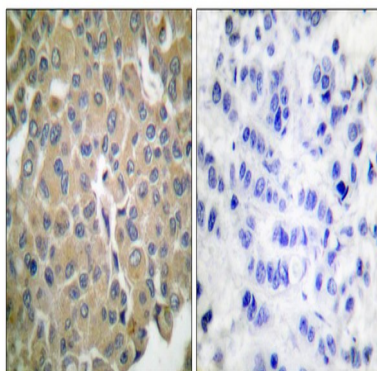


Background

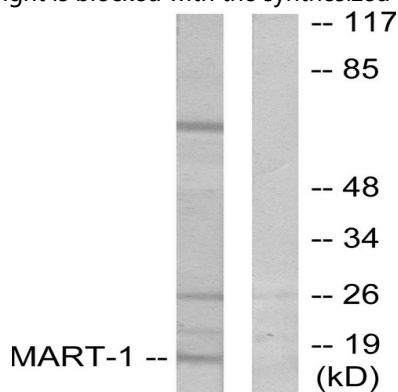
tissue specificity:Expression is restricted to melanoma and melanocyte cell lines and retina.,tissue specificity:Expression is restricted to melanoma and melanocyte cell lines and retina.,

Research Area

Image Data

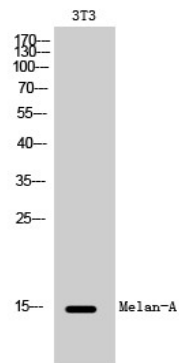


Immunohistochemistry analysis of paraffin-embedded human breast carcinoma tissue, using MART-1 Antibody. The picture on the right is blocked with the synthesized peptide.



Western blot analysis of lysates from NIH/3T3 cells, using MART-1 Antibody. The lane on the right is blocked with the synthesized peptide.

Product Name: Melan-A Rabbit Polyclonal Antibody
Catalog #: APRab13814



Western Blot analysis of 3T3 cells using Melan-A Polyclonal Antibody

Note

For research use only.