

---

## Summary

<b>Production Name</b>	Megsin Rabbit Polyclonal Antibody
<b>Description</b>	Rabbit Polyclonal Antibody
<b>Host</b>	Rabbit
<b>Application</b>	WB,ELISA
<b>Reactivity</b>	Human,Rat,Mouse

## Performance

<b>Conjugation</b>	Unconjugated
<b>Modification</b>	Unmodified
<b>Isotype</b>	IgG
<b>Clonality</b>	Polyclonal
<b>Form</b>	Liquid
<b>Storage</b>	Store at 4°C short term. Aliquot and store at -20°C long term. Avoid freeze/thaw cycles.
<b>Buffer</b>	Liquid in PBS containing 50% glycerol, 0.5% BSA and 0.02% New type preservative N.
<b>Purification</b>	Affinity purification

## Immunogen

<b>Gene Name</b>	SERPINB7
<b>Alternative Names</b>	SERPINB7; Serpin B7; Megsin; TP55
<b>Gene ID</b>	8710.0
<b>SwissProt ID</b>	O75635.The antiserum was produced against synthesized peptide derived from human SERPINB7. AA range:111-160

## Application

<b>Dilution Ratio</b>	WB 1:500 - 1:2000. ELISA: 1:20000
<b>Molecular Weight</b>	43kD

## Background

---

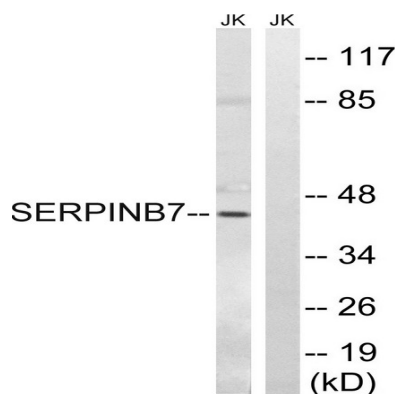
**Product Name: Megsin Rabbit Polyclonal Antibody**  
**Catalog #: APRab13789**



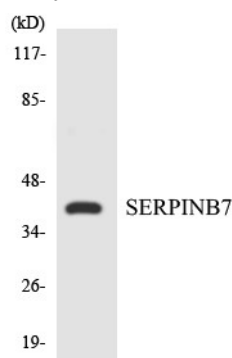
This gene encodes a member of a family of proteins which function as protease inhibitors. Expression of this gene is upregulated in IgA nephropathy and mutations have been found to cause palmoplantar keratoderma, Nagashima type. Alternative splicing results in multiple transcript variants. [provided by RefSeq, Jun 2014],function:Might function as an inhibitor of Lys-specific proteases. Might influence the maturation of megakaryocytes via its action as a serpin.,similarity:Belongs to the serpin family.,similarity:Belongs to the serpin family. Ov-serpin subfamily.,tissue specificity:Predominantly expressed in mesangial cells.,

## Research Area

## Image Data



Western blot analysis of lysates from Jurkat cells, using SERPINB7 Antibody. The lane on the right is blocked with the synthesized peptide.



Western blot analysis of the lysates from Jurkat cells using SERPINB7 antibody.

## Note

For research use only.