

---

## Summary

<b>Production Name</b>	MEF-2B Rabbit Polyclonal Antibody
<b>Description</b>	Rabbit Polyclonal Antibody
<b>Host</b>	Rabbit
<b>Application</b>	WB,ELISA
<b>Reactivity</b>	Human,Mouse

## Performance

<b>Conjugation</b>	Unconjugated
<b>Modification</b>	Unmodified
<b>Isotype</b>	IgG
<b>Clonality</b>	Polyclonal
<b>Form</b>	Liquid
<b>Storage</b>	Store at 4°C short term. Aliquot and store at -20°C long term. Avoid freeze/thaw cycles.
<b>Buffer</b>	Liquid in PBS containing 50% glycerol, 0.5% BSA and 0.02% New type preservative N.
<b>Purification</b>	Affinity purification

## Immunogen

<b>Gene Name</b>	MEF2B
<b>Alternative Names</b>	MEF2B; XMEF2; Myocyte-specific enhancer factor 2B; RSRFR2; Serum response factor-like protein 2
<b>Gene ID</b>	4207.0
<b>SwissProt ID</b>	Q02080.The antiserum was produced against synthesized peptide derived from human MEF2B. AA range:51-100

## Application

<b>Dilution Ratio</b>	WB 1:500 - 1:2000. ELISA: 1:10000
<b>Molecular Weight</b>	38kD

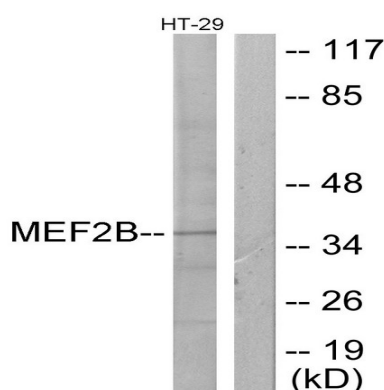
## Background

This gene represents numerous read-through transcripts that span GenelD:729991 and 100271849. Many read-through transcripts are predicted to be nonsense-mediated decay (NMD) candidates, and are thought to be non-coding. Some transcripts are predicted to be capable of translation reinitiation at a downstream AUG, resulting in expression of at least one isoform of myocyte enhancer factor 2B (MEF2B) from this read-through locus. At least one additional MEF2B variant and isoform can be expressed from a downstream promoter, and is annotated on GenelD:100271849. [provided by RefSeq, Oct 2010],function:Transcriptional activator which binds specifically to the MEF2 element, 5'-YTA[AT](4)TAR-3', found in numerous muscle-specific genes. Activates transcription via this element. May be involved in muscle-specific and/or growth factor-related transcription.,similarity:Belongs to the MEF2 family.,similarity:Contains 1 MADS-box domain.,similarity:Contains 1 Mef2-type DNA-binding domain.,subunit:Interacts with HDAC7 (By similarity). Heterodimer. Interacts with HDAC9.,tissue specificity:Expressed in skeletal and cardiac muscle and brain.,

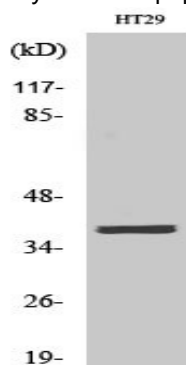
## Research Area

AMPK; Protein\_Acetylation

## Image Data



Western blot analysis of lysates from HT-29 cells, using MEF2B Antibody. The lane on the right is blocked with the synthesized peptide.



Western Blot analysis of various cells using MEF-2B Polyclonal Antibody cells nucleus extracted by Minute TM Cytoplasmic

**Product Name: MEF-2B Rabbit Polyclonal Antibody**  
**Catalog #: APRab13784**



---

and Nuclear Fractionation kit (SC-003, Inventbiotech, MN, USA) .

**Note**

For research use only.