
Summary

Production Name	ME2 Rabbit Polyclonal Antibody
Description	Rabbit Polyclonal Antibody
Host	Rabbit
Application	WB,IHC,ELISA
Reactivity	Human,Rat,Mouse

Performance

Conjugation	Unconjugated
Modification	Unmodified
Isotype	IgG
Clonality	Polyclonal
Form	Liquid
Storage	Store at 4°C short term. Aliquot and store at -20°C long term. Avoid freeze/thaw cycles.
Buffer	Liquid in PBS containing 50% glycerol, 0.5% BSA and 0.02% New type preservative N.
Purification	Affinity purification

Immunogen

Gene Name	ME2
Alternative Names	ME2; NAD-dependent malic enzyme; mitochondrial; NAD-ME; Malic enzyme 2
Gene ID	4200.0
SwissProt ID	P23368.The antiserum was produced against synthesized peptide derived from human ME2. AA range:201-250

Application

Dilution Ratio	WB 1:500 - 1:2000. IHC 1:100 - 1:300. ELISA: 1:40000..
Molecular Weight	65kD

Background

Product Name: ME2 Rabbit Polyclonal Antibody
Catalog #: APRab13763

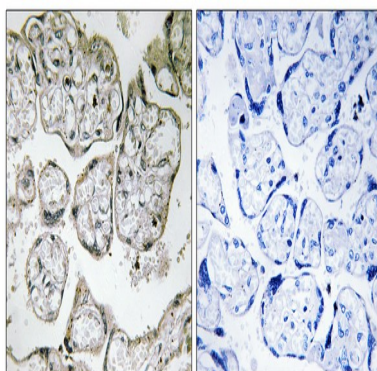


This gene encodes a mitochondrial NAD-dependent malic enzyme, a homotetrameric protein, that catalyzes the oxidative decarboxylation of malate to pyruvate. It had previously been weakly linked to a syndrome known as Friedreich ataxia that has since been shown to be the result of mutation in a completely different gene. Certain single-nucleotide polymorphism haplotypes of this gene have been shown to increase the risk for idiopathic generalized epilepsy. Alternatively spliced transcript variants encoding different isoforms found for this gene. [provided by RefSeq, Dec 2009],catalytic activity:(S)-malate + NAD(+) = pyruvate + CO(2) + NADH.,cofactor:Divalent metal cations. Prefers magnesium or manganese.,enzyme regulation:Subject to allosteric activation by fumarate.,miscellaneous:This isoenzyme can also use NADP(+) but is more effective with NAD(+),similarity:Belongs to the malic enzymes family.,subunit:Homotetramer.,

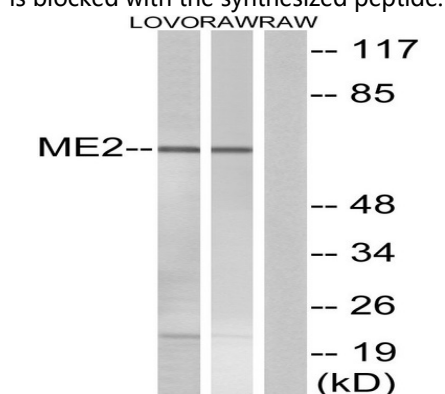
Research Area

Pyruvate metabolism;

Image Data



Immunohistochemistry analysis of paraffin-embedded human placenta tissue, using ME2 Antibody. The picture on the right is blocked with the synthesized peptide.



Western blot analysis of lysates from RAW264.7 and LOVO cells, using ME2 Antibody. The lane on the right is blocked with the synthesized peptide.

Product Name: ME2 Rabbit Polyclonal Antibody
Catalog #: APRab13763



Note

For research use only.