

## Summary

<b>Production Name</b>	MDA-7 Rabbit Polyclonal Antibody
<b>Description</b>	Rabbit Polyclonal Antibody
<b>Host</b>	Rabbit
<b>Application</b>	WB,IHC,
<b>Reactivity</b>	Human,Rat,Mouse

## Performance

<b>Conjugation</b>	Unconjugated
<b>Modification</b>	Unmodified
<b>Isotype</b>	IgG
<b>Clonality</b>	Polyclonal
<b>Form</b>	Liquid
<b>Storage</b>	Store at 4°C short term. Aliquot and store at -20°C long term. Avoid freeze/thaw cycles.
<b>Buffer</b>	Liquid in PBS containing 50% glycerol, 0.5% BSA and 0.02% New type preservative N.
<b>Purification</b>	Affinity purification

## Immunogen

<b>Gene Name</b>	IL24
<b>Alternative Names</b>	IL24; MDA7; ST16; Interleukin-24; IL-24; Melanoma differentiation-associated gene 7 protein; MDA-7; Suppression of tumorigenicity 16 protein
<b>Gene ID</b>	11009.0
<b>SwissProt ID</b>	Q13007.The antiserum was produced against synthesized peptide derived from the Internal region of human IL24. AA range:131-180

## Application

<b>Dilution Ratio</b>	WB 1:500 - 1:2000 IHC 1:100 - 1:300. ELISA: 1:20000..
<b>Molecular Weight</b>	24kD

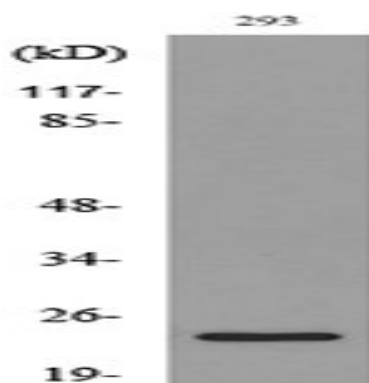
## Background

This gene encodes a member of the IL10 family of cytokines. It was identified as a gene induced during terminal differentiation in melanoma cells. The protein encoded by this gene can induce apoptosis selectively in various cancer cells. Overexpression of this gene leads to elevated expression of several GADD family genes, which correlates with the induction of apoptosis. The phosphorylation of mitogen-activated protein kinase 14 (MAPK7/P38), and heat shock 27kDa protein 1 (HSPB2/HSP27) are found to be induced by this gene in melanoma cells, but not in normal immortal melanocytes. Alternatively spliced transcript variants encoding distinct isoforms have been reported. [provided by RefSeq, Jul 2008],caution:The sequence shown here is derived from an Ensembl automatic analysis pipeline and should be considered as preliminary data.,function:Has antiproliferative properties on melanoma cells and may contribute to terminal cell differentiation.,online information:Interleukin-24 entry,similarity:Belongs to the IL-10 family.,tissue specificity:Up-regulated in melanoma cells induced to terminally differentiate.,

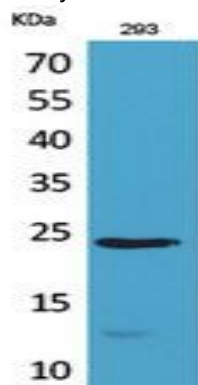
## Research Area

Cytokine-cytokine receptor interaction;Jak\_STAT;

## Image Data

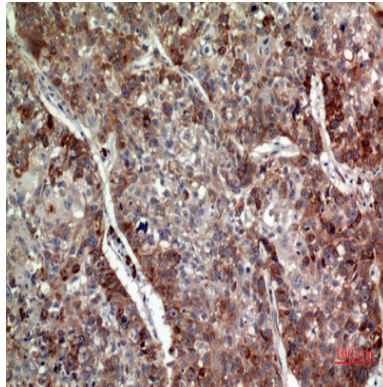


Western blot analysis of lysate from 293 cells, using IL24 Antibody.

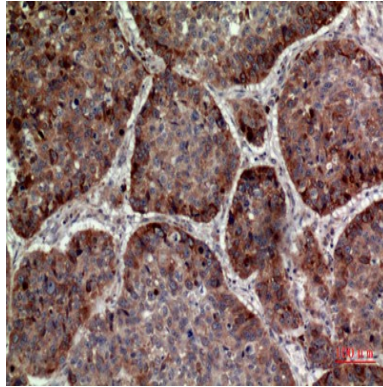


Western Blot analysis of 293 cells using MDA-7 Polyclonal Antibody.. Secondary antibody was diluted at 1:20000

**Product Name: MDA-7 Rabbit Polyclonal Antibody**  
**Catalog #: APRab13747**



Immunohistochemical analysis of paraffin-embedded human-lung, antibody was diluted at 1:100



Immunohistochemical analysis of paraffin-embedded human-lung, antibody was diluted at 1:100

**Note**

For research use only.