

Summary

Production Name	MCM7 Rabbit Polyclonal Antibody
Description	Rabbit Polyclonal Antibody
Host	Rabbit
Application	WB,IHC,ELISA
Reactivity	Human,Mouse,Rat

Performance

Conjugation	Unconjugated
Modification	Unmodified
Isotype	IgG
Clonality	Polyclonal
Form	Liquid
Storage	Store at 4°C short term. Aliquot and store at -20°C long term. Avoid freeze/thaw cycles.
Buffer	Liquid in PBS containing 50% glycerol, 0.5% BSA and 0.02% New type preservative N.
Purification	Affinity purification

Immunogen

Gene Name	MCM7
Alternative Names	MCM7; CDC47; MCM2; DNA replication licensing factor MCM7; CDC47 homolog; P1.1-MCM3
Gene ID	4176.0
SwissProt ID	P33993.The antiserum was produced against synthesized peptide derived from the Internal region of human MCM7. AA range:491-540

Application

Dilution Ratio	WB 1:500 - 1:2000. IHC: 1:100-1:300. ELISA: 1:20000..
Molecular Weight	81kD

Product Name: MCM7 Rabbit Polyclonal Antibody
Catalog #: APRab13728



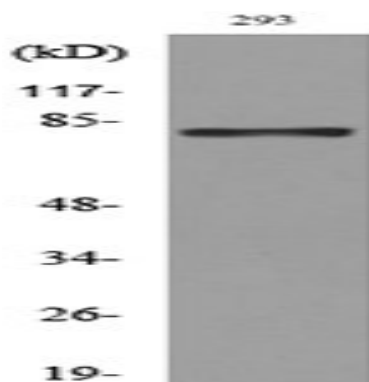
Background

The protein encoded by this gene is one of the highly conserved mini-chromosome maintenance proteins (MCM) that are essential for the initiation of eukaryotic genome replication. The hexameric protein complex formed by the MCM proteins is a key component of the pre-replication complex (pre_RC) and may be involved in the formation of replication forks and in the recruitment of other DNA replication related proteins. The MCM complex consisting of this protein and MCM2, 4 and 6 proteins possesses DNA helicase activity, and may act as a DNA unwinding enzyme. Cyclin D1-dependent kinase, CDK4, is found to associate with this protein, and may regulate the binding of this protein with the tumoursuppressor protein RB1/RB. Alternatively spliced transcript variants encoding distinct isoforms have been reported. [provided by RefSeq, Jul 2008],function:Acts as a factor that allows the DNA to undergo a single round of replication per cell cycle. Required for DNA replication and cell proliferation. Required for S-phase checkpoint activation upon UV-induced damage.,PTM:Phosphorylated upon DNA damage, probably by ATM or ATR.,similarity:Belongs to the MCM family.,similarity:Contains 1 MCM domain.,subunit:Interacts with the ATR-ATRIP complex and with RAD17. Interacts with TIPIN.,

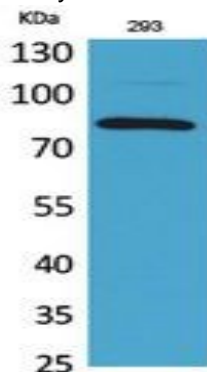
Research Area

DNA replication;Cell_Cycle_G1S;Cell_Cycle_G2M_DNA;

Image Data



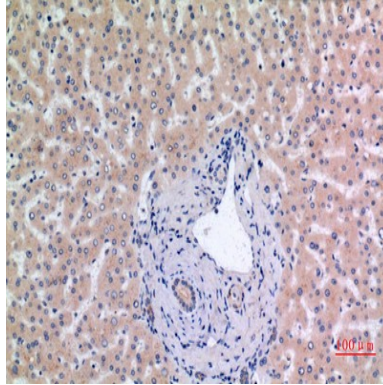
Western blot analysis of lysate from 293 cells, using MCM7 Antibody.



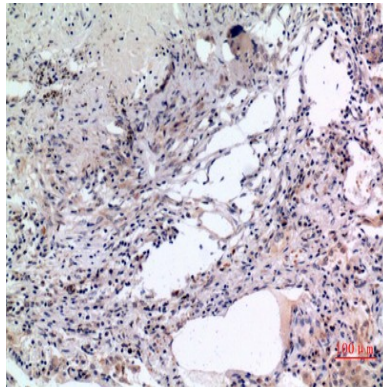
Product Name: MCM7 Rabbit Polyclonal Antibody
Catalog #: APRab13728



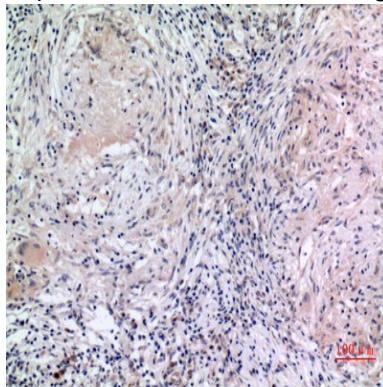
Western Blot analysis of 293 cells using MCM7 Polyclonal Antibody.. Secondary antibody was diluted at 1:20000



Immunohistochemical analysis of paraffin-embedded human-liver, antibody was diluted at 1:100



Immunohistochemical analysis of paraffin-embedded human-lung, antibody was diluted at 1:100



Immunohistochemical analysis of paraffin-embedded human-lung, antibody was diluted at 1:100

Note

For research use only.