

Summary

Production Name	MCM3 Rabbit Polyclonal Antibody
Description	Rabbit Polyclonal Antibody
Host	Rabbit
Application	WB,IHC,
Reactivity	Human,Rat,Mouse

Performance

Conjugation	Unconjugated
Modification	Unmodified
Isotype	IgG
Clonality	Polyclonal
Form	Liquid
Storage	Store at 4°C short term. Aliquot and store at -20°C long term. Avoid freeze/thaw cycles.
Buffer	Liquid in PBS containing 50% glycerol, 0.5% BSA and 0.02% New type preservative N.
Purification	Affinity purification

Immunogen

Gene Name	MCM3
Alternative Names	MCM3; DNA replication licensing factor MCM3; DNA polymerase alpha holoenzyme-associated protein P1; P1-MCM3; RLF subunit beta; p102
Gene ID	4172.0
SwissProt ID	P25205.The antiserum was produced against synthesized peptide derived from the Internal region of human MCM3. AA range:641-690

Application

Dilution Ratio	WB 1:500 - 1:2000. IHC-p: 1:100-300 ELISA: 1:20000..
Molecular Weight	89kD

Product Name: MCM3 Rabbit Polyclonal Antibody
Catalog #: APRab13720



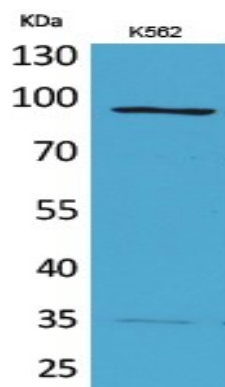
Background

The protein encoded by this gene is one of the highly conserved mini-chromosome maintenance proteins (MCM) that are involved in the initiation of eukaryotic genome replication. The hexameric protein complex formed by MCM proteins is a key component of the pre-replication complex (pre_RC) and may be involved in the formation of replication forks and in the recruitment of other DNA replication related proteins. This protein is a subunit of the protein complex that consists of MCM2-7. It has been shown to interact directly with MCM5/CDC46. This protein also interacts with and is acetylated by MCM3AP, a chromatin-associated acetyltransferase. The acetylation of this protein inhibits the initiation of DNA replication and cell cycle progression. Two transcript variants encoding different isoforms have been found for this gene. [provided by RefSeq, Jul 2012],function:Acts as a factor that allows the DNA to undergo a single round of replication per cell cycle. Required for DNA replication and cell proliferation.,miscellaneous:Associated with the replication-specific DNA polymerase alpha.,PTM:Phosphorylated upon DNA damage, probably by ATM or ATR.,similarity:Belongs to the MCM family.,similarity:Contains 1 MCM domain.,

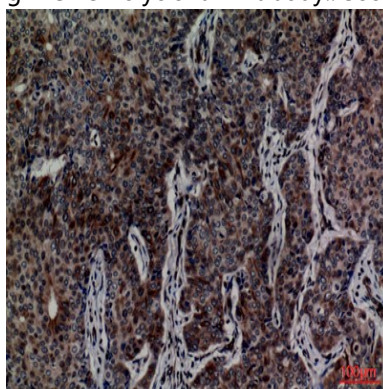
Research Area

DNA replication;Cell_Cycle_G1S;Cell_Cycle_G2M_DNA;

Image Data

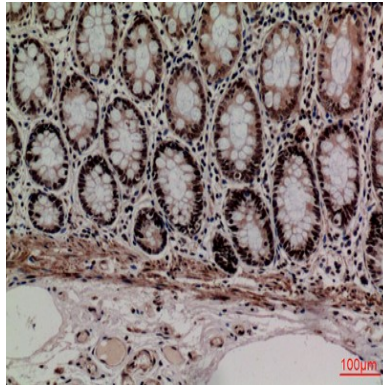


Western Blot analysis of K562 cells using MCM3 Polyclonal Antibody.. Secondary antibody was diluted at 1:20000

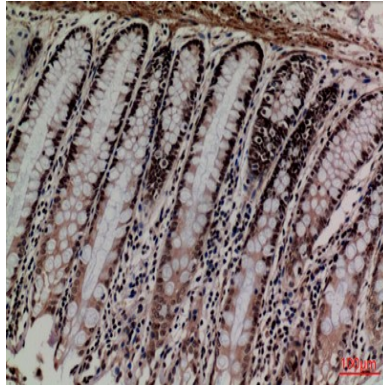


Immunohistochemical analysis of paraffin-embedded human-breast-cancer, antibody was diluted at 1:100

Product Name: MCM3 Rabbit Polyclonal Antibody
Catalog #: APRab13720



Immunohistochemical analysis of paraffin-embedded human-colon, antibody was diluted at 1:100



Immunohistochemical analysis of paraffin-embedded human-colon, antibody was diluted at 1:100

Note

For research use only.