

Summary

Production Name	Mas1-like Rabbit Polyclonal Antibody
Description	Rabbit Polyclonal Antibody
Host	Rabbit
Application	IF,ELISA
Reactivity	Human,Rat,Mouse

Performance

Conjugation	Unconjugated
Modification	Unmodified
Isotype	IgG
Clonality	Polyclonal
Form	Liquid
Storage	Store at 4°C short term. Aliquot and store at -20°C long term. Avoid freeze/thaw cycles.
Buffer	Liquid in PBS containing 50% glycerol, 0.5% BSA and 0.02% New type preservative N.
Purification	Affinity purification

Immunogen

Gene Name	MAS1L
Alternative Names	MAS1L; MRG; Mas-related G-protein coupled receptor MRG; MAS-R; MAS1-like
Gene ID	116511.0
SwissProt ID	P35410.The antiserum was produced against synthesized peptide derived from human MAS1L. AA range:31-80

Application

Dilution Ratio	IF 1:200-1:1000. ELISA: 1:5000.
Molecular Weight	

Background

similarity:Belongs to the G-protein coupled receptor 1 family.,similarity:Belongs to the G-protein coupled receptor 1 family.

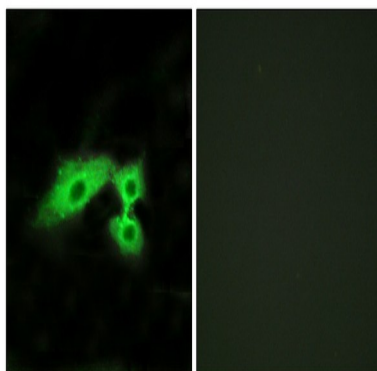
Product Name: Mas1-like Rabbit Polyclonal Antibody
Catalog #: APRab13653



Mas subfamily, similarity: Belongs to the G-protein coupled receptor 1 family, similarity: Belongs to the G-protein coupled receptor 1 family. Mas subfamily,

Research Area

Image Data



Immunofluorescence analysis of HeLa cells, using MAS1L Antibody. The picture on the right is blocked with the synthesized peptide.

Note

For research use only.