

Summary

Production Name	MARCH3 Rabbit Polyclonal Antibody
Description	Rabbit Polyclonal Antibody
Host	Rabbit
Application	IHC,WB,
Reactivity	Human,Mouse,Rat,Monkey

Performance

Conjugation	Unconjugated
Modification	Unmodified
Isotype	IgG
Clonality	Polyclonal
Form	Liquid
Storage	Store at 4°C short term. Aliquot and store at -20°C long term. Avoid freeze/thaw cycles.
Buffer	Liquid in PBS containing 50% glycerol, 0.5% BSA and 0.02% New type preservative N.
Purification	Affinity purification

Immunogen

Gene Name	45354.0 MARCH3; RNF173; E3 ubiquitin-protein ligase MARCH3; Membrane-associated RING
Alternative Names	finger protein 3; Membrane-associated RING-CH protein III; MARCH-III; RING finger protein 173
Gene ID	115123.0
SwissProt ID	Q86UD3.The antiserum was produced against synthesized peptide derived from human MARCH3. AA range:111-160

Application

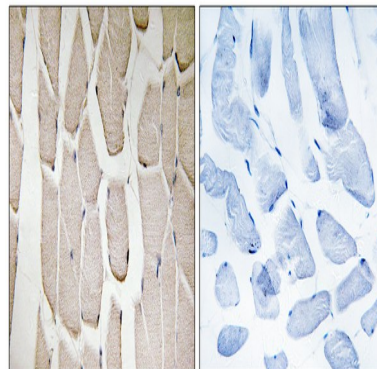
Dilution Ratio	WB 1:500 - 1:2000. IHC 1:100 - 1:300. ELISA: 1:40000..
Molecular Weight	29kD

Background

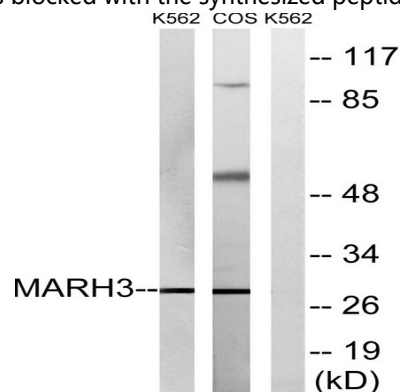
This gene encodes a member of the membrane-associated RING-CH (MARCH) family. The encoded protein is an E3 ubiquitin-protein ligase that may be involved in regulation of the endosomal transport pathway. [provided by RefSeq, Mar 2013],domain:The RING-CH-type zinc finger domain is required for E3 ligase activity.,function:E3 ubiquitin-protein ligase which may be involved in endosomal trafficking. E3 ubiquitin ligases accept ubiquitin from an E2 ubiquitin-conjugating enzyme in the form of a thioester and then directly transfer the ubiquitin to targeted substrates.,pathway:Protein modification; protein ubiquitination.,similarity:Contains 1 RING-CH-type zinc finger.,subunit:Interacts with MARCH2 and STX6,

Research Area

Image Data

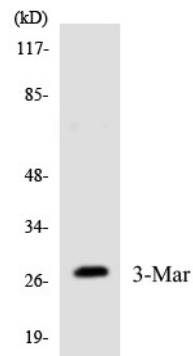


Immunohistochemistry analysis of paraffin-embedded human heart tissue, using MARCH3 Antibody. The picture on the right is blocked with the synthesized peptide.

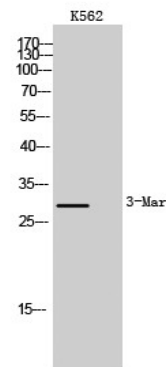


Western blot analysis of lysates from K562 and COS7 cells, using MARCH3 Antibody. The lane on the right is blocked with the synthesized peptide.

Product Name: MARCH3 Rabbit Polyclonal Antibody
Catalog #: APRab13637



Western blot analysis of the lysates from RAW264.7 cells using MARCH3 antibody.



Western Blot analysis of K562 cells using MARCH3 Polyclonal Antibody

Note

For research use only.