

Product Name: MAPK Organizer 1 Rabbit Polyclonal Antibody
Catalog #: APRab13632



Summary

Production Name	MAPK Organizer 1 Rabbit Polyclonal Antibody
Description	Rabbit Polyclonal Antibody
Host	Rabbit
Application	WB,IHC,IF,ELISA
Reactivity	Human,Mouse,Rat

Performance

Conjugation	Unconjugated
Modification	Unmodified
Isotype	IgG
Clonality	Polyclonal
Form	Liquid
Storage	Store at 4°C short term. Aliquot and store at -20°C long term. Avoid freeze/thaw cycles.
Buffer	Liquid in PBS containing 50% glycerol, 0.5% BSA and 0.02% New type preservative N.
Purification	Affinity purification

Immunogen

Gene Name	WDR83
Alternative Names	WDR83; MORG1; WD repeat domain-containing protein 83; Mitogen-activated protein kinase organizer 1; MAPK organizer 1
Gene ID	84292.0
SwissProt ID	Q9BRX9.The antiserum was produced against synthesized peptide derived from the Internal region of human WDR83. AA range:141-190

Application

Dilution Ratio	WB 1:500 - 1:2000. IHC-p: 1:100-1:300. ELISA: 1:20000.. IF 1:50-200
Molecular Weight	34kD

Product Name: MAPK Organizer 1 Rabbit Polyclonal Antibody
Catalog #: APRab13632

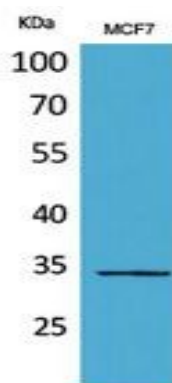


Background

This gene encodes a member of the WD-40 protein family. The protein is proposed to function as a molecular scaffold for various multimeric protein complexes. The protein associates with several components of the extracellular signal-regulated kinase (ERK) pathway, and promotes ERK activity in response to serum or other signals. The protein also interacts with egl nine homolog 3 (EGLN3, also known as PHD3) and regulates expression of hypoxia-inducible factor 1, and has been purified as part of the spliceosome. Alternative splicing results in multiple transcript variants. [provided by RefSeq, Oct 2009],function:Molecular scaffold protein for various multimeric protein complexes. Acts as a module in the assembly of a multicomponent scaffold for the ERK pathway, linking ERK responses to specific agonists. At low concentrations it enhances ERK activation, whereas high concentrations lead to the inhibition of ERK activation. Also involved in response to hypoxia by acting as a negative regulator of HIF1A/HIF-1-alpha via its interaction with EGLN3/PHD3. May promote degradation of HIF1A. May act by recruiting signaling complexes to a specific upstream activator (By similarity). May also be involved in pre-mRNA splicing.,similarity:Belongs to the WD repeat MORG1 family.,similarity:Contains 7 WD repeats.,subcellular location:Predominantly cytoplasmic (By similarity). Partially nuclear.,subunit:Interacts with EGLN3/PHD3. Interacts with ERK signaling proteins MAP2K1/MEK1, MAP2K2/MEK2, MAP2K1IP1/MP1, ARAF/Raf-1, MAPK1/ERK2 and MAPK3/ERK1 (By similarity). Identified in the spliceosome C complex, at least composed of AQR, ASCC3L1, C19orf29, CDC40, CDC5L, CRNKL1, DDX23, DDX41, DDX48, DDX5, DGCR14, DHX35, DHX38, DHX8, EFTUD2, FRG1, GPATC1, HNRPA1, HNRPA2B1, HNRPA3, HNRPC, HNRPF, HNRPH1, HNRPK, HNRPM, HNRPR, HNRPU, KIAA1160, KIAA1604, LSM2, LSM3, MAGOH, MORG1, PABPC1, PLRG1, PNN, PPIE, PPIL1, PPIL3, PPWD1, PRPF19, PRPF4B, PRPF6, PRPF8, RALY, RBM22, RBM8A, RBMX, SART1, SF3A1, SF3A2, SF3A3, SF3B1, SF3B2, SF3B3, SFRS1, SKIV2L2, SNRPA1, SNRPB, SNRPB2, SNRPD1, SNRPD2, SNRPD3, SNRPE, SNRPF, SNRPG, SNW1, SRRM1, SRRM2, SYF2, SYNCRIP, TFIP11, THOC4, U2AF1, WDR57, XAB2 and ZCCHC8.,

Research Area

Image Data

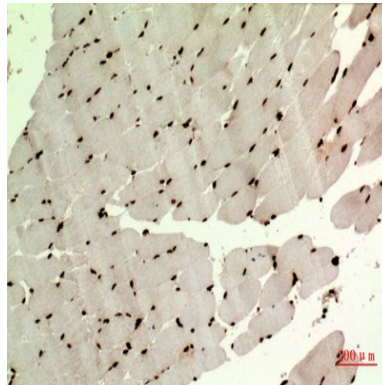


Western Blot analysis of MCF7 cells using MAPK Organizer 1 Polyclonal Antibody.. Secondary antibody was diluted at

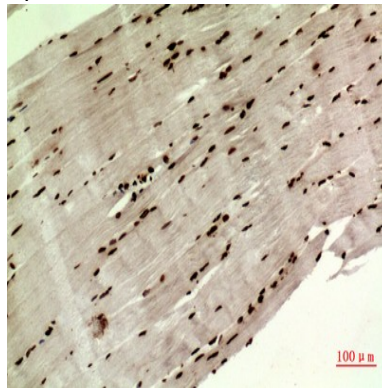
Product Name: MAPK Organizer 1 Rabbit Polyclonal Antibody
Catalog #: APRab13632



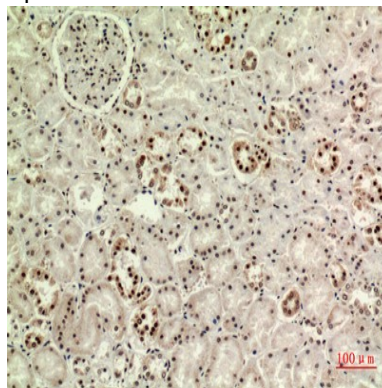
1:20000



Immunohistochemical analysis of paraffin-embedded human-muscle, antibody was diluted at 1:100

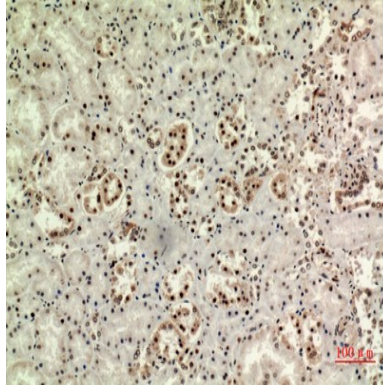


Immunohistochemical analysis of paraffin-embedded human-muscle, antibody was diluted at 1:100

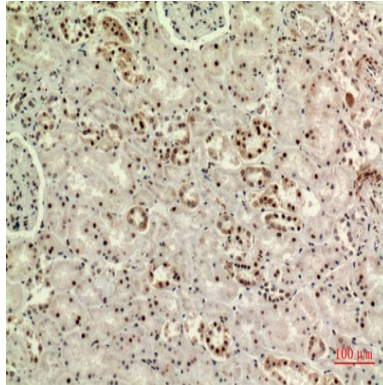


Immunohistochemical analysis of paraffin-embedded human-kidney, antibody was diluted at 1:100

**Product Name: MAPK Organizer 1 Rabbit Polyclonal
Antibody**
Catalog #: APRab13632



Immunohistochemical analysis of paraffin-embedded human-kidney, antibody was diluted at 1:100



Immunohistochemical analysis of paraffin-embedded human-kidney, antibody was diluted at 1:100

Note

For research use only.