

Product Name: MAP-9 Rabbit Polyclonal Antibody
Catalog #: APRab13631



Summary

Production Name	MAP-9 Rabbit Polyclonal Antibody
Description	Rabbit Polyclonal Antibody
Host	Rabbit
Application	WB,ELISA
Reactivity	Human,Rat,Mouse

Performance

Conjugation	Unconjugated
Modification	Unmodified
Isotype	IgG
Clonality	Polyclonal
Form	Liquid
Storage	Store at 4°C short term. Aliquot and store at -20°C long term. Avoid freeze/thaw cycles.
Buffer	Liquid in PBS containing 50% glycerol, 0.5% BSA and 0.02% New type preservative N.
Purification	Affinity purification

Immunogen

Gene Name	MAP9
Alternative Names	MAP9; ASAP; Microtubule-associated protein 9; Aster-associated protein
Gene ID	79884.0
SwissProt ID	Q49MG5.The antiserum was produced against synthesized peptide derived from human MAP9. AA range:121-170

Application

Dilution Ratio	WB 1:500 - 1:2000. ELISA: 1:40000.
Molecular Weight	75kD

Background

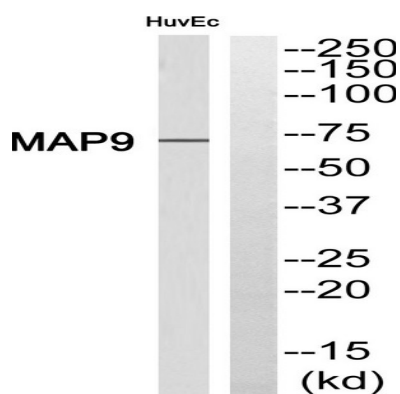
Product Name: MAP-9 Rabbit Polyclonal Antibody
Catalog #: APRab13631



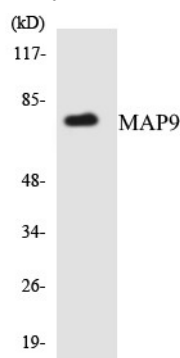
ASAP is a microtubule-associated protein required for spindle function, mitotic progression, and cytokinesis (Saffin et al., 2005 [PubMed 16049101]).[supplied by OMIM, Mar 2008],developmental stage:Constitutively expressed during the cell cycle.,function:Involved in organization of the bipolar mitotic spindle. Required for bipolar spindle assembly, mitosis progression and cytokinesis. May act by stabilizing interphase microtubules.,PTM:Phosphorylated upon DNA damage, probably by ATM or ATR.,subcellular location:Localizes to microtubules in interphase, associates with the mitotic spindle during mitosis, localizes to the central body during cytokinesis.,subunit:Binds to purified microtubules via its C-terminus.,

Research Area

Image Data



Western blot analysis of MAP9 Antibody. The lane on the right is blocked with the MAP9 peptide.



Western blot analysis of the lysates from HUVECcells using MAP9 antibody.

Note

For research use only.