

Summary

Production Name	MAP4 Rabbit Polyclonal Antibody
Description	Rabbit Polyclonal Antibody
Host	Rabbit
Application	WB
Reactivity	Human,Mouse,Rat

Performance

Conjugation	Unconjugated
Modification	Unmodified
Isotype	IgG
Clonality	Polyclonal
Form	Liquid
Storage	Store at 4°C short term. Aliquot and store at -20°C long term. Avoid freeze/thaw cycles.
Buffer	Liquid in PBS containing 50% glycerol, 0.5% BSA and 0.02% New type preservative N.
Purification	Affinity purification

Immunogen

Gene Name	MAP4
Alternative Names	Microtubule-associated protein 4 (MAP-4)
Gene ID	4134.0
SwissProt ID	P27816.Synthesized peptide derived from human MAP4 Polyclonal

Application

Dilution Ratio	WB 1:500-2000, ELISA 1:10000-20000
Molecular Weight	121kD

Background

The protein encoded by this gene is a major non-neuronal microtubule-associated protein. This protein contains a domain similar to the microtubule-binding domains of neuronal microtubule-associated protein (MAP2) and microtubule-

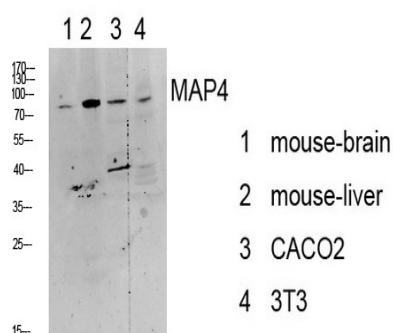
Product Name: MAP4 Rabbit Polyclonal Antibody
Catalog #: APRab13629



associated protein tau (MAPT/TAU). This protein promotes microtubule assembly, and has been shown to counteract destabilization of interphase microtubule catastrophe promotion. Cyclin B was found to interact with this protein, which targets cell division cycle 2 (CDC2) kinase to microtubules. The phosphorylation of this protein affects microtubule properties and cell cycle progression. Multiple transcript variants encoding different isoforms have been found for this gene. [provided by RefSeq, Aug 2008],alternative products:Additional isoforms seem to exist,caution:The sequence shown here is derived from an Ensembl automatic analysis pipeline and should be considered as preliminary data.,function:Non-neuronal microtubule-associated protein. Promotes microtubule assembly.,PTM:Phosphorylated upon DNA damage, probably by ATM or ATR (By similarity). Phosphorylation on Ser-787 negatively regulates MAP4 activity to promote microtubule assembly. Isoform 3 is phosphorylated on Ser-337 and Ser-338.,similarity:Contains 3 Tau/MAP repeats.,similarity:Contains 4 Tau/MAP repeats.,

Research Area

Image Data



Western blot analysis of various lysate, antibody was diluted at 1000. Secondary antibody was diluted at 1:20000

Note

For research use only.