

## Summary

<b>Production Name</b>	MAGAC Rabbit Polyclonal Antibody
<b>Description</b>	Rabbit Polyclonal Antibody
<b>Host</b>	Rabbit
<b>Application</b>	WB
<b>Reactivity</b>	Human,Rat,Mouse

## Performance

<b>Conjugation</b>	Unconjugated
<b>Modification</b>	Unmodified
<b>Isotype</b>	IgG
<b>Clonality</b>	Polyclonal
<b>Form</b>	Liquid
<b>Storage</b>	Store at 4°C short term. Aliquot and store at -20°C long term. Avoid freeze/thaw cycles.
<b>Buffer</b>	Liquid in PBS containing 50% glycerol, and 0.02% New type preservative N.
<b>Purification</b>	Affinity purification

## Immunogen

<b>Gene Name</b>	MAGEA12 MAGE12
<b>Alternative Names</b>	
<b>Gene ID</b>	4111.0
<b>SwissProt ID</b>	P43365.Synthesized peptide derived from human protein . at AA range: 40-120

## Application

<b>Dilution Ratio</b>	WB 1:500-2000 ELISA 1:5000-20000
<b>Molecular Weight</b>	34kD

## Background

MAGE family member A12(MAGEA12) Homo sapiens This gene is closely related to several other genes clustered on chromosome X. These genes may be overexpressed in tumors. Multiple alternatively spliced variants encoding the same

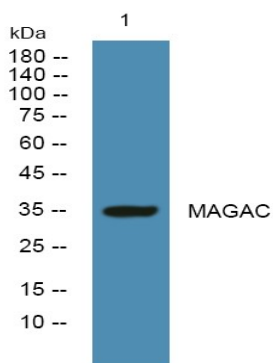
**Product Name: MAGAC Rabbit Polyclonal Antibody**  
**Catalog #: APRab13574**



protein have been identified. [provided by RefSeq, Jun 2014],function:Not known, though may play a role in tumor transformation or aspects of tumor progression.,similarity:Contains 1 MAGE domain.,tissue specificity:Expressed in many tumors of several types, such as melanoma, head and neck squamous cell carcinoma, lung carcinoma and breast carcinoma, but not in normal tissues except for testes.,

## Research Area

## Image Data



Western blot analysis of lysates from DU145 cells, primary antibody was diluted at 1:1000, 4°over night

## Note

For research use only.