

Product Name: Macroglobulin α -2 Rabbit Polyclonal Antibody
Catalog #: APRab13548



Summary

Production Name	Macroglobulin α -2 Rabbit Polyclonal Antibody
Description	Rabbit Polyclonal Antibody
Host	Rabbit
Application	WB,IHC,IF,ELISA
Reactivity	Human,Rat,Mouse

Performance

Conjugation	Unconjugated
Modification	Unmodified
Isotype	IgG
Clonality	Polyclonal
Form	Liquid
Storage	Store at 4°C short term. Aliquot and store at -20°C long term. Avoid freeze/thaw cycles.
Buffer	Liquid in PBS containing 50% glycerol, 0.5% BSA and 0.02% New type preservative N.
Purification	Affinity purification

Immunogen

Gene Name	A2M
Alternative Names	A2M; CPAMD5; FWP007; Alpha-2-macroglobulin; Alpha-2-M; C3 and PZP-like alpha-2-macroglobulin domain-containing protein 5
Gene ID	2.0
SwissProt ID	P01023.The antiserum was produced against synthesized peptide derived from the Internal region of human A2M. AA range:871-920

Application

Dilution Ratio	WB 1:500 - 1:2000. IHC-p: 1:100-1:300. ELISA: 1:20000.. IF 1:50-200
Molecular Weight	170kD

Product Name: Macroglobulin α -2 Rabbit Polyclonal Antibody
Catalog #: APRab13548



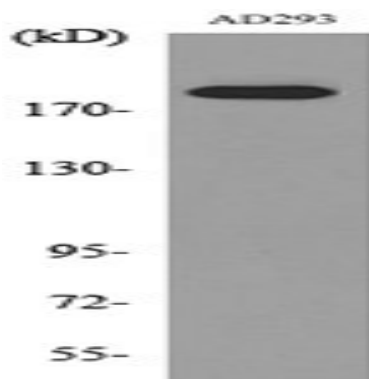
Background

Alpha-2-macroglobulin is a protease inhibitor and cytokine transporter. It inhibits many proteases, including trypsin, thrombin and collagenase. A2M is implicated in Alzheimer disease (AD) due to its ability to mediate the clearance and degradation of A-beta, the major component of beta-amyloid deposits. [provided by RefSeq, Jul 2008],developmental stage:Contrary to the rat protein, which is an acute phase protein, this protein is always present at high levels in circulation.,function:Is able to inhibit all four classes of proteinases by a unique 'trapping' mechanism. This protein has a peptide stretch, called the 'bait region' which contains specific cleavage sites for different proteinases. When a proteinase cleaves the bait region, a conformational change is induced in the protein which traps the proteinase. The entrapped enzyme remains active against low molecular weight substrates (activity against high molecular weight substrates is greatly reduced). Following cleavage in the bait region a thioester bond is hydrolyzed and mediates the covalent binding of the protein to the proteinase.,online information:Alpha-2 macroglobulin entry,similarity:Belongs to the protease inhibitor I39 (alpha-2-macroglobulin) family.,subunit:Homotetramer; disulfide-linked.,tissue specificity:Plasma,

Research Area

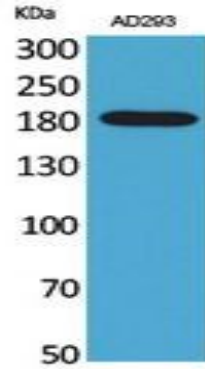
Complement and coagulation cascades;

Image Data

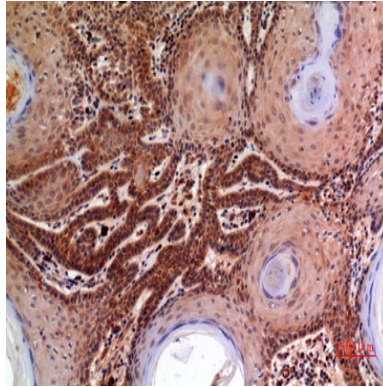


Western blot analysis of lysate from AD293 cells, using A2M Antibody.

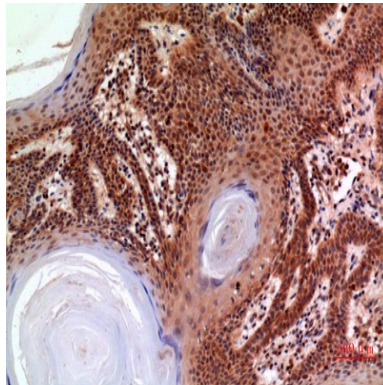
Product Name: Macroglobulin α -2 Rabbit Polyclonal Antibody
Catalog #: APRab13548



Western Blot analysis of AD293 cells using Macroglobulin α -2 Polyclonal Antibody.. Secondary antibody was diluted at 1:20000

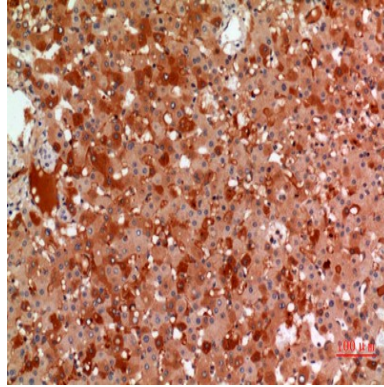


Immunohistochemical analysis of paraffin-embedded human-skin, antibody was diluted at 1:100

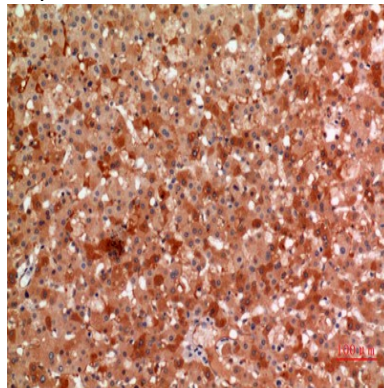


Immunohistochemical analysis of paraffin-embedded human-skin, antibody was diluted at 1:100

Product Name: Macroglobulin α -2 Rabbit Polyclonal Antibody
Catalog #: APRab13548



Immunohistochemical analysis of paraffin-embedded human-liver, antibody was diluted at 1:100



Immunohistochemical analysis of paraffin-embedded human-liver, antibody was diluted at 1:100

Note

For research use only.