

---

## Summary

<b>Production Name</b>	mAChR M4 Rabbit Polyclonal Antibody
<b>Description</b>	Rabbit Polyclonal Antibody
<b>Host</b>	Rabbit
<b>Application</b>	WB,IF,ELISA
<b>Reactivity</b>	Human,Mouse,Rat

## Performance

<b>Conjugation</b>	Unconjugated
<b>Modification</b>	Unmodified
<b>Isotype</b>	IgG
<b>Clonality</b>	Polyclonal
<b>Form</b>	Liquid
<b>Storage</b>	Store at 4°C short term. Aliquot and store at -20°C long term. Avoid freeze/thaw cycles.
<b>Buffer</b>	Liquid in PBS containing 50% glycerol, 0.5% BSA and 0.02% New type preservative N.
<b>Purification</b>	Affinity purification

## Immunogen

<b>Gene Name</b>	CHRM4
<b>Alternative Names</b>	CHRM4; Muscarinic acetylcholine receptor M4
<b>Gene ID</b>	1132.0
<b>SwissProt ID</b>	P08173.The antiserum was produced against synthesized peptide derived from human CHRM4. AA range:236-285

## Application

<b>Dilution Ratio</b>	WB 1:500 - 1:2000. IF 1:200 - 1:1000. ELISA: 1:10000. Not yet tested in other applications.
<b>Molecular Weight</b>	53kD

**Product Name: mAChR M4 Rabbit Polyclonal Antibody**  
**Catalog #: APRab13545**



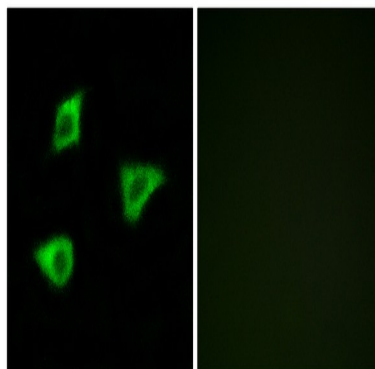
## Background

The muscarinic cholinergic receptors belong to a larger family of G protein-coupled receptors. The functional diversity of these receptors is defined by the binding of acetylcholine and includes cellular responses such as adenylate cyclase inhibition, phosphoinositide degeneration, and potassium channel mediation. Muscarinic receptors influence many effects of acetylcholine in the central and peripheral nervous system. The clinical implications of this receptor are unknown; however, mouse studies link its function to adenylyl cyclase inhibition. [provided by RefSeq, Jul 2008],function:The muscarinic acetylcholine receptor mediates various cellular responses, including inhibition of adenylate cyclase, breakdown of phosphoinositides and modulation of potassium channels through the action of G proteins. Primary transducing effect is inhibition of adenylate cyclase.,similarity:Belongs to the G-protein coupled receptor 1 family.,

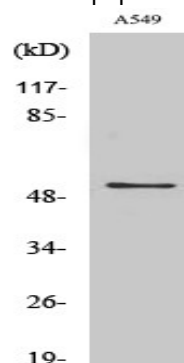
## Research Area

Neuroactive ligand-receptor interaction;Regulates Actin and Cytoskeleton;

## Image Data



Immunofluorescence analysis of LOVO cells, using CHR4 Antibody. The picture on the right is blocked with the synthesized peptide.



Western Blot analysis of various cells using mAChR M4 Polyclonal Antibody

**Product Name: mAChR M4 Rabbit Polyclonal Antibody**  
**Catalog #: APRab13545**



---

**Note**

For research use only.