
Summary

Production Name	LYAR Rabbit Polyclonal Antibody
Description	Rabbit Polyclonal Antibody
Host	Rabbit
Application	WB,
Reactivity	Human,Rat,Mouse

Performance

Conjugation	Unconjugated
Modification	Unmodified
Isotype	IgG
Clonality	Polyclonal
Form	Liquid
Storage	Store at 4°C short term. Aliquot and store at -20°C long term. Avoid freeze/thaw cycles.
Buffer	Liquid in PBS containing 50% glycerol, 0.5% BSA and 0.02% New type preservative N.
Purification	Affinity purification

Immunogen

Gene Name	LYAR
Alternative Names	LYAR; PNAS-5; Cell growth-regulating nucleolar protein
Gene ID	55646.0
SwissProt ID	Q9NX58.The antiserum was produced against synthesized peptide derived from human LYAR. AA range:241-290

Application

Dilution Ratio	WB 1:500 - 1:2000. ELISA: 1:10000..
Molecular Weight	44kD

Background

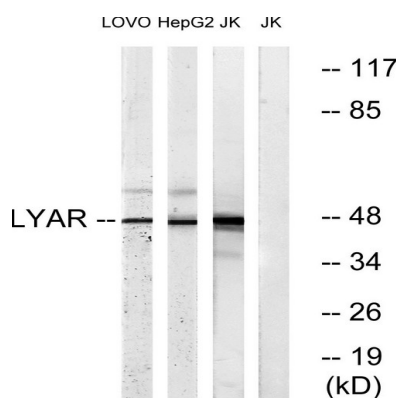
Product Name: LYAR Rabbit Polyclonal Antibody
Catalog #: APRab13506



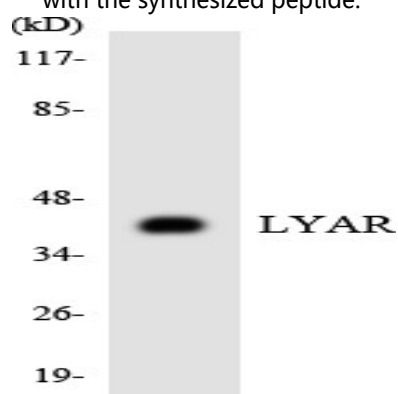
similarity:Contains 2 C2HC-type zinc fingers.,similarity:Contains 2 C2HC-type zinc fingers.,

Research Area

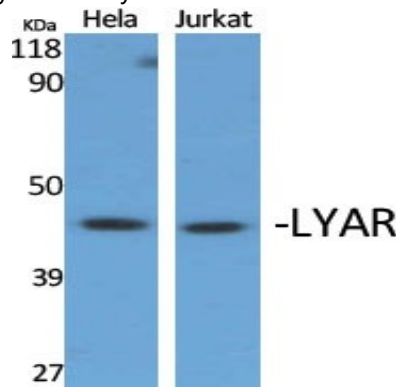
Image Data



Western blot analysis of lysates from Jurkat, HepG2, and LOVO cells, using LYAR Antibody. The lane on the right is blocked with the synthesized peptide.

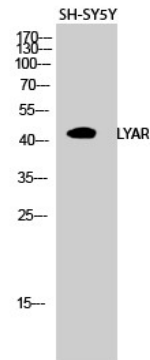


Western blot analysis of the lysates from K562 cells using LYAR antibody.



Western Blot analysis of various cells using LYAR Polyclonal Antibody diluted at 1: 2000 cells nucleus extracted by Minute TM Cytoplasmic and Nuclear Fractionation kit (SC-003, Inventbiotech, MN, USA).

Product Name: LYAR Rabbit Polyclonal Antibody
Catalog #: APRab13506



Western Blot analysis of SH-SY5Y cells using LYAR Polyclonal Antibody diluted at 1: 2000 cells nucleus extracted by Minute
TM Cytoplasmic and Nuclear Fractionation kit (SC-003, Inventbiotech, MN, USA) .

Note

For research use only.