

Summary

Production Name	LTβR Rabbit Polyclonal Antibody
Description	Rabbit Polyclonal Antibody
Host	Rabbit
Application	IF, WB, ELISA
Reactivity	Human, Mouse

Performance

Conjugation	Unconjugated
Modification	Unmodified
Isotype	IgG
Clonality	Polyclonal
Form	Liquid
Storage	Store at 4°C short term. Aliquot and store at -20°C long term. Avoid freeze/thaw cycles.
Buffer	Liquid in PBS containing 50% glycerol, 0.5% BSA and 0.02% New type preservative N.
Purification	Affinity purification

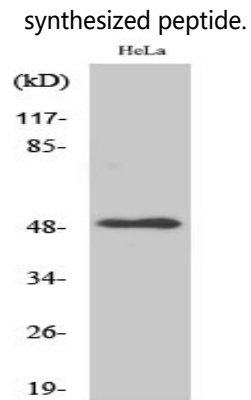
Immunogen

Gene Name	LTBR LTBR; D12S370; TNFCR; TNFR3; TNFRSF3; Tumor necrosis factor receptor superfamily member 3; Lymphotoxin-beta receptor; Tumor necrosis factor C receptor; Tumor necrosis factor receptor 2-related protein; Tumor necrosis factor receptor type II
Alternative Names	
Gene ID	4055.0
SwissProt ID	P36941. The antiserum was produced against synthesized peptide derived from human LTBR. AA range: 11-60

Application

Dilution Ratio	WB 1:500 - 1:2000. IF 1:200 - 1:1000. ELISA: 1:40000. Not yet tested in other applications.
-----------------------	---

Product Name: LTβR Rabbit Polyclonal Antibody
Catalog #: APRab13483



Western Blot analysis of various cells using LTβR Polyclonal Antibody

Note

For research use only.