
Summary

Production Name	LT- β Rabbit Polyclonal Antibody
Description	Rabbit Polyclonal Antibody
Host	Rabbit
Application	IHC,ELISA
Reactivity	Human,Rat,Mouse

Performance

Conjugation	Unconjugated
Modification	Unmodified
Isotype	IgG
Clonality	Polyclonal
Form	Liquid
Storage	Store at 4°C short term. Aliquot and store at -20°C long term. Avoid freeze/thaw cycles.
Buffer	Liquid in PBS containing 50% glycerol, 0.5% BSA and 0.02% New type preservative N.
Purification	Affinity purification

Immunogen

Gene Name	LTB TNFC TNFSF3
Alternative Names	Lymphotoxin-beta (LT-beta;Tumor necrosis factor C;TNF-C;Tumor necrosis factor ligand superfamily member 3)
Gene ID	4050.0
SwissProt ID	Q06643.Synthetic peptide from human protein at AA range: 41-90

Application

Dilution Ratio	IHC-p 1:50-200, ELISA 1:10000-20000
Molecular Weight	

Background

Product Name: LT- β Rabbit Polyclonal Antibody
Catalog #: APRab13482

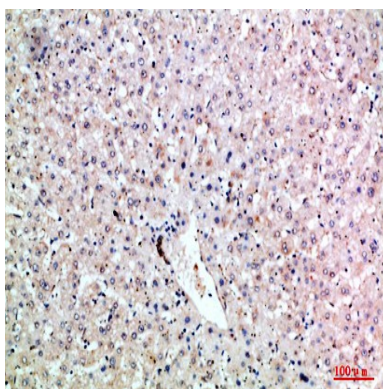


Lymphotoxin beta is a type II membrane protein of the TNF family. It anchors lymphotoxin-alpha to the cell surface through heterotrimer formation. The predominant form on the lymphocyte surface is the lymphotoxin-alpha 1/beta 2 complex (e.g. 1 molecule alpha/2 molecules beta) and this complex is the primary ligand for the lymphotoxin-beta receptor. The minor complex is lymphotoxin-alpha 2/beta 1. LTB is an inducer of the inflammatory response system and involved in normal development of lymphoid tissue. Lymphotoxin-beta isoform b is unable to complex with lymphotoxin-alpha suggesting a function for lymphotoxin-beta which is independent of lymphotoxin-alpha. Alternative splicing results in multiple transcript variants encoding different isoforms. [provided by RefSeq, Jul 2008],function:Cytokine that binds to LTBR/TNFRSF3. May play a specific role in immune response regulation. Provides the membrane anchor for the attachment of the heterotrimeric complex to the cell surface. Isoform 2 is probably non-functional.,similarity:Belongs to the tumor necrosis factor family.,subunit:Heterotrimer of either two LTB and one LTA subunits or (less prevalent) one LTB and two LTA subunits.,tissue specificity:Spleen and thymus.,

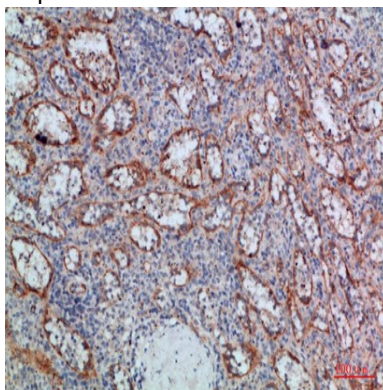
Research Area

Cytokine-cytokine receptor interaction;

Image Data

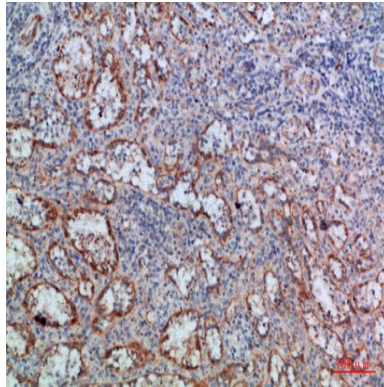


Immunohistochemical analysis of paraffin-embedded human-liver, antibody was diluted at 1:200



Immunohistochemical analysis of paraffin-embedded human-spleen, antibody was diluted at 1:200

Product Name: LT- β Rabbit Polyclonal Antibody
Catalog #: APRab13482



Immunohistochemical analysis of paraffin-embedded human-spleen, antibody was diluted at 1:200

Note

For research use only.