

Summary

Production Name	LRP11 Rabbit Polyclonal Antibody
Description	Rabbit Polyclonal Antibody
Host	Rabbit
Application	WB
Reactivity	Human,Rat,Mouse

Performance

Conjugation	Unconjugated
Modification	Unmodified
Isotype	IgG
Clonality	Polyclonal
Form	Liquid
Storage	Store at 4°C short term. Aliquot and store at -20°C long term. Avoid freeze/thaw cycles.
Buffer	Liquid in PBS containing 50% glycerol, 0.5% BSA and 0.02% New type preservative N.
Purification	Affinity purification

Immunogen

Gene Name	LRP11
Alternative Names	LRP11; Low-density lipoprotein receptor-related protein 11; LRP-11
Gene ID	84918.0
SwissProt ID	Q86VZ4.The antiserum was produced against synthesized peptide derived from human LRP11. AA range:48-97

Application

Dilution Ratio	WB 1: 500-2000
Molecular Weight	50kD

Background

similarity:Belongs to the LDLR family.,similarity:Contains 1 LDL-receptor class A domain.,similarity:Contains 1 MANSC

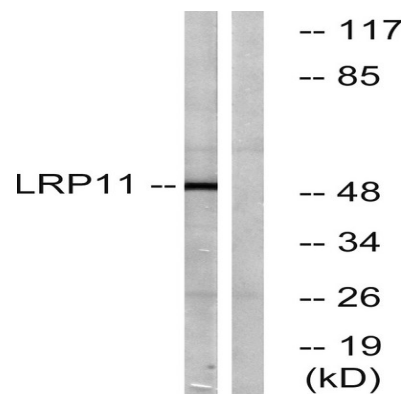
Product Name: LRP11 Rabbit Polyclonal Antibody
Catalog #: APRab13428



domain.,similarity:Contains 1 PKD domain.,similarity:Belongs to the LDLR family.,similarity:Contains 1 LDL-receptor class A domain.,similarity:Contains 1 MANSC domain.,similarity:Contains 1 PKD domain.,

Research Area

Image Data



Western blot analysis of lysates from Jurkat cells, using LRP11 Antibody. The lane on the right is blocked with the synthesized peptide.

Note

For research use only.