

Product Name: LRP10 Rabbit Polyclonal Antibody
Catalog #: APRab13427



Summary

Production Name	LRP10 Rabbit Polyclonal Antibody
Description	Rabbit Polyclonal Antibody
Host	Rabbit
Application	IHC,ELISA
Reactivity	Human,Mouse,Rat

Performance

Conjugation	Unconjugated
Modification	Unmodified
Isotype	IgG
Clonality	Polyclonal
Form	Liquid
Storage	Store at 4°C short term. Aliquot and store at -20°C long term. Avoid freeze/thaw cycles.
Buffer	Liquid in PBS containing 50% glycerol, 0.5% BSA and 0.02% New type preservative N.
Purification	Affinity purification

Immunogen

Gene Name	LRP10
Alternative Names	LRP10; MSTP087; SP220; Low-density lipoprotein receptor-related protein 10; LRP-10
Gene ID	26020.0
SwissProt ID	Q7Z4F1.The antiserum was produced against synthesized peptide derived from human LRP10. AA range:204-253

Application

Dilution Ratio	IHC 1:100-1:300 ELISA: 1:10000
Molecular Weight	76kD

Background

This gene encodes a low density lipoprotein receptor family protein. A similar protein in mouse is thought to play a role in

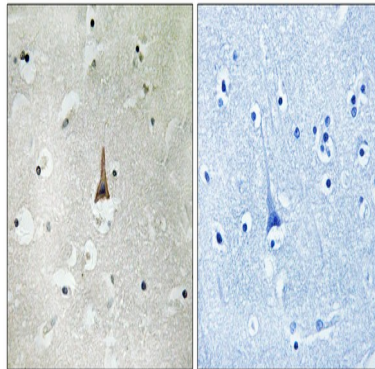
Product Name: LRP10 Rabbit Polyclonal Antibody
Catalog #: APRab13427



the uptake of apolipoprotein E-containing lipoproteins. [provided by RefSeq, Jul 2016],function:Probable receptor, which is involved in the internalization of lipophilic molecules and/or signal transduction. May be involved in the uptake of lipoprotein APOE in liver.,sequence caution:Chimera.,similarity:Belongs to the LDLR family.,similarity:Contains 2 CUB domains.,similarity:Contains 4 LDL-receptor class A domains.,tissue specificity:Expressed in blood leukocyte, lung, placenta, small intestine, liver, kidney, spleen, thymus, colon, skeletal muscle and heart.,

Research Area

Image Data



Immunohistochemistry analysis of paraffin-embedded human brain tissue, using LRP10 Antibody. The picture on the right is blocked with the synthesized peptide.

Note

For research use only.