

Summary

Production Name	LRG1 Rabbit Polyclonal Antibody
Description	Rabbit Polyclonal Antibody
Host	Rabbit
Application	WB,ELISA
Reactivity	Human,Rat,Mouse

Performance

Conjugation	Unconjugated
Modification	Unmodified
Isotype	IgG
Clonality	Polyclonal
Form	Liquid
Storage	Store at 4°C short term. Aliquot and store at -20°C long term. Avoid freeze/thaw cycles.
Buffer	Liquid in PBS containing 50% glycerol, 0.5% BSA and 0.02% New type preservative N.
Purification	Affinity purification

Immunogen

Gene Name	LRG1
Alternative Names	LRG1; LRG; Leucine-rich alpha-2-glycoprotein; LRG
Gene ID	116844.0
SwissProt ID	P02750.Synthesized peptide derived from the C-terminal region of human LRG1.

Application

Dilution Ratio	WB 1:500-2000 ELISA 2000-20000
Molecular Weight	58kD

Background

The leucine-rich repeat (LRR) family of proteins, including LRG1, have been shown to be involved in protein-protein

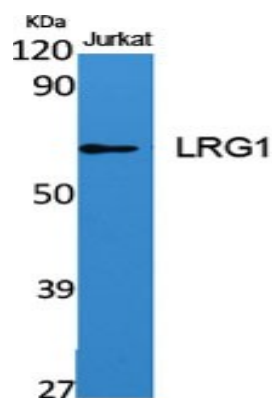
Product Name: LRG1 Rabbit Polyclonal Antibody
Catalog #: APRab13419



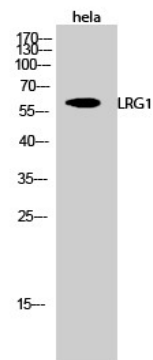
interaction, signal transduction, and cell adhesion and development. LRG1 is expressed during granulocyte differentiation (O'Donnell et al., 2002 [PubMed 12223515]).[supplied by OMIM, Mar 2008],similarity:Contains 8 LRR (leucine-rich) repeats.,tissue specificity:Plasma,.

Research Area

Image Data



Western Blot analysis of various cells using LRG1 Polyclonal Antibody



Western Blot analysis of hela cells using LRG1 Polyclonal Antibody

Note

For research use only.