

Product Name: LRBA Rabbit Polyclonal Antibody
Catalog #: APRab13401



Summary

Production Name	LRBA Rabbit Polyclonal Antibody
Description	Rabbit Polyclonal Antibody
Host	Rabbit
Application	WB,ELISA
Reactivity	Human,Mouse

Performance

Conjugation	Unconjugated
Modification	Unmodified
Isotype	IgG
Clonality	Polyclonal
Form	Liquid
Storage	Store at 4°C short term. Aliquot and store at -20°C long term. Avoid freeze/thaw cycles.
Buffer	Liquid in PBS containing 50% glycerol, and 0.02% New type preservative N.
Purification	Affinity purification

Immunogen

Gene Name	LRBA BGL CDC4L LBA
Alternative Names	
Gene ID	987.0
SwissProt ID	P50851.Synthesized peptide derived from human protein . at AA range: 1970-2050

Application

Dilution Ratio	IHC 1:50-300
Molecular Weight	314kD

Background

The protein encoded by this gene is a member of the WDL-BEACH-WD (WBW) gene family. Its expression is induced in B cells and macrophages by bacterial lipopolysaccharides (LPS). The encoded protein associates with protein kinase A and

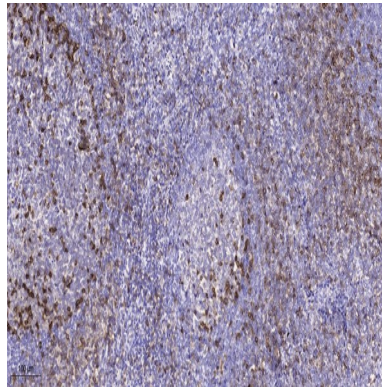
Product Name: LRBA Rabbit Polyclonal Antibody
Catalog #: APRab13401



may be involved in leading intracellular vesicles to activated receptor complexes, which aids in the secretion and/or membrane deposition of immune effector molecules. Defects in this gene are associated with the disorder common variable immunodeficiency-8 with autoimmunity. Two transcript variants encoding different isoforms have been found for this gene. [provided by RefSeq, Dec 2012],caution:Was originally (PubMed:1505956) said to be similar to yeast CDC4, but that similarity is very limited.,induction:By lipopolysaccharide (LPS),.PTM:Phosphorylated upon DNA damage, probably by ATM or ATR.,similarity:Contains 1 BEACH domain.,similarity:Contains 6 WD repeats.,

Research Area

Image Data



Immunohistochemical analysis of paraffin-embedded human tonsil. 1, Antibody was diluted at 1:200 (4° overnight) . 2, Tris-EDTA,pH9.0 was used for antigen retrieval. 3,Secondary antibody was diluted at 1:200 (room temperature, 45min) .

Note

For research use only.