

## Summary

<b>Production Name</b>	LIR-6 Rabbit Polyclonal Antibody
<b>Description</b>	Rabbit Polyclonal Antibody
<b>Host</b>	Rabbit
<b>Application</b>	IF, WB,
<b>Reactivity</b>	Human, Rat, Mouse

## Performance

<b>Conjugation</b>	Unconjugated
<b>Modification</b>	Unmodified
<b>Isotype</b>	IgG
<b>Clonality</b>	Polyclonal
<b>Form</b>	Liquid
<b>Storage</b>	Store at 4°C short term. Aliquot and store at -20°C long term. Avoid freeze/thaw cycles.
<b>Buffer</b>	Liquid in PBS containing 50% glycerol, 0.5% BSA and 0.02% New type preservative N.
<b>Purification</b>	Affinity purification

## Immunogen

<b>Gene Name</b>	LILRA1
<b>Alternative Names</b>	LILRA1; LIR6; Leukocyte immunoglobulin-like receptor subfamily A member 1; CD85 antigen-like family member I; Leukocyte immunoglobulin-like receptor 6; LIR-6; CD antigen CD85i
<b>Gene ID</b>	11024.0
<b>SwissProt ID</b>	O75019. The antiserum was produced against synthesized peptide derived from human LILRA1. AA range:53-102

## Application

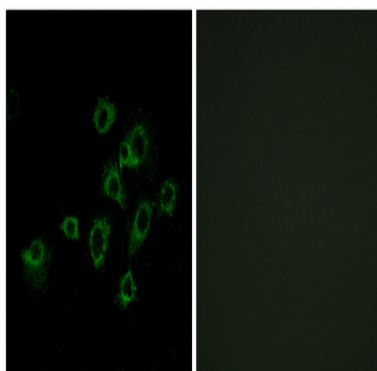
<b>Dilution Ratio</b>	WB 1:500-2000; IF 1:200 - 1:1000
<b>Molecular Weight</b>	53kD

## Background

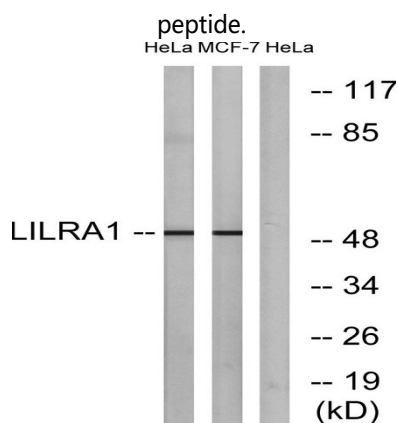
This gene encodes an activating member of the leukocyte immunoglobulin-like receptor (LIR) family, which is found in a gene cluster at chromosomal region 19q13.4. The encoded protein is predominantly expressed in B cells, interacts with major histocompatibility complex class I ligands, and contributes to the regulation of immune responses. Alternative splicing results in multiple transcript variants encoding different isoforms. [provided by RefSeq, May 2013],function:May act as receptor for class I MHC antigens.,similarity:Contains 4 Ig-like C2-type (immunoglobulin-like) domains.,tissue specificity:Detected in monocytes and B-cells.,

## Research Area

## Image Data

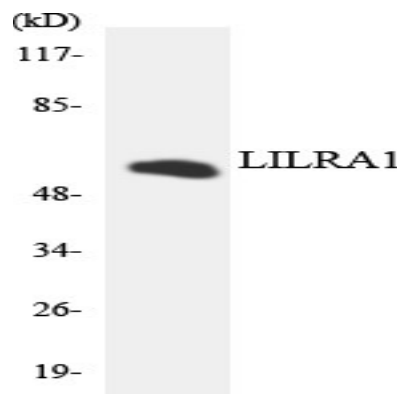


Immunofluorescence analysis of A549 cells, using LILRA1 Antibody. The picture on the right is blocked with the synthesized

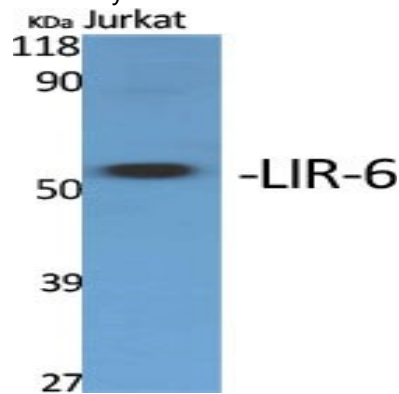


Western blot analysis of lysates from HeLa and MCF-7 cells, using LILRA1 Antibody. The lane on the right is blocked with the synthesized peptide.

Product Name: LIR-6 Rabbit Polyclonal Antibody  
Catalog #: APRab13333



Western blot analysis of the lysates from HeLa cells using LILRA1 antibody.



Western Blot analysis of various cells using LIR-6 Polyclonal Antibody



Western Blot analysis of MCF7 cells using LIR-6 Polyclonal Antibody

## Note

For research use only.