

---

## Summary

<b>Production Name</b>	LGR6 Rabbit Polyclonal Antibody
<b>Description</b>	Rabbit Polyclonal Antibody
<b>Host</b>	Rabbit
<b>Application</b>	IF, WB,
<b>Reactivity</b>	Human, Rat, Mouse

## Performance

<b>Conjugation</b>	Unconjugated
<b>Modification</b>	Unmodified
<b>Isotype</b>	IgG
<b>Clonality</b>	Polyclonal
<b>Form</b>	Liquid
<b>Storage</b>	Store at 4°C short term. Aliquot and store at -20°C long term. Avoid freeze/thaw cycles.
<b>Buffer</b>	Liquid in PBS containing 50% glycerol, 0.5% BSA and 0.02% New type preservative N.
<b>Purification</b>	Affinity purification

## Immunogen

<b>Gene Name</b>	LGR6
<b>Alternative Names</b>	LGR6; Leucine-rich repeat-containing G-protein coupled receptor 6
<b>Gene ID</b>	59352.0
<b>SwissProt ID</b>	Q9HBX8. The antiserum was produced against synthesized peptide derived from human LGR6. AA range: 471-520

## Application

<b>Dilution Ratio</b>	WB 1:500 - 1:2000. IF 1:200 - 1:1000.
<b>Molecular Weight</b>	104kD

## Background

---

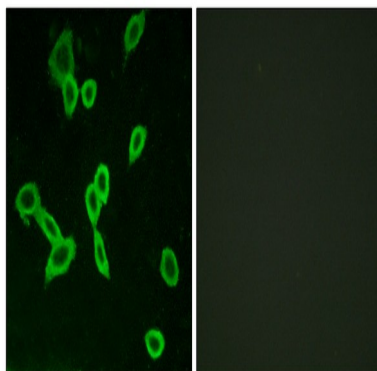
**Product Name: LGR6 Rabbit Polyclonal Antibody**  
**Catalog #: APRab13293**



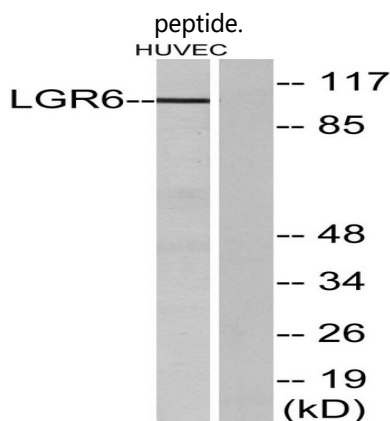
This gene encodes a member of the leucine-rich repeat-containing subgroup of the G protein-coupled 7-transmembrane protein superfamily. The encoded protein is a glycoprotein hormone receptor with a large N-terminal extracellular domain that contains leucine-rich repeats important for the formation of a horseshoe-shaped interaction motif for ligand binding. Alternative splicing of this gene results in multiple transcript variants. [provided by RefSeq, Jul 2008],function:Orphan receptor.,PTM:Phosphorylated upon DNA damage, probably by ATM or ATR.,similarity:Belongs to the G-protein coupled receptor 1 family.,similarity:Contains 16 LRR (leucine-rich) repeats.,

## Research Area

## Image Data

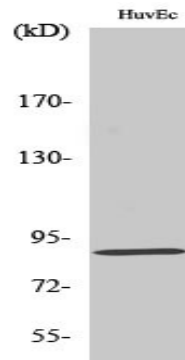


Immunofluorescence analysis of LOVO cells, using LGR6 Antibody. The picture on the right is blocked with the synthesized



Western blot analysis of lysates from HUVEC cells, using LGR6 Antibody. The lane on the right is blocked with the synthesized peptide.

**Product Name: LGR6 Rabbit Polyclonal Antibody**  
**Catalog #: APRab13293**



Western Blot analysis of various cells using LGR6 Polyclonal Antibody diluted at 1 : 500

**Note**

For research use only.