

Product Name: Lfc Rabbit Polyclonal Antibody
Catalog #: APRab13284



Summary

| | |
|------------------------|--------------------------------|
| Production Name | Lfc Rabbit Polyclonal Antibody |
| Description | Rabbit Polyclonal Antibody |
| Host | Rabbit |
| Application | WB,ELISA |
| Reactivity | Human,Mouse,Rat |

Performance

| | |
|---------------------|--|
| Conjugation | Unconjugated |
| Modification | Unmodified |
| Isotype | IgG |
| Clonality | Polyclonal |
| Form | Liquid |
| Storage | Store at 4°C short term. Aliquot and store at -20°C long term. Avoid freeze/thaw cycles. |
| Buffer | Liquid in PBS containing 50% glycerol, 0.5% BSA and 0.02% New type preservative N. |
| Purification | Affinity purification |

Immunogen

| | |
|--------------------------|--|
| Gene Name | ARHGEF2 |
| Alternative Names | ARHGEF2; KIAA0651; LFP40; Rho guanine nucleotide exchange factor 2; Guanine nucleotide exchange factor H1; GEF-H1; Microtubule-regulated Rho-GEF; Proliferating cell nucleolar antigen p40 |
| Gene ID | 9181.0 |
| SwissProt ID | Q92974.The antiserum was produced against synthesized peptide derived from C-terminal human ARHGEF2. AA range:851-900 |

Application

| | |
|-------------------------|---------------------------------|
| Dilution Ratio | WB 1:500-2000; ELISA 2000-20000 |
| Molecular Weight | 111kD |

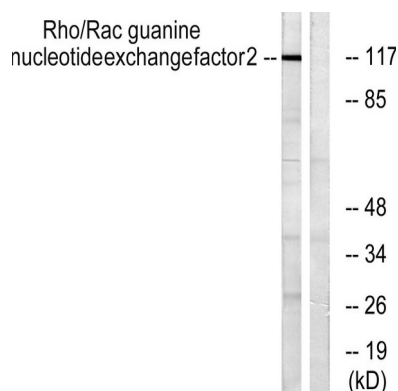
Background

Rho GTPases play a fundamental role in numerous cellular processes that are initiated by extracellular stimuli that work through G protein coupled receptors. The encoded protein may form complex with G proteins and stimulate rho-dependent signals. Alternatively spliced transcript variants encoding different isoforms have been identified.[provided by RefSeq, Jun 2009],domain:The DH (DBL-homology) domain interacts with and promotes loading of GTP on RhoA.,domain:The PH (pleckstrin-homology) domain is involved in microtubule binding and targeting to tight junctions.,function:Activates Rho-GTPases by promoting the exchange of GDP for GTP. May be involved in epithelial barrier permeability, cell motility and polarization, dendritic spine morphology, antigen presentation, leukemic cell differentiation, cell cycle regulation, and cancer. Binds Rac-GTPases, but does not seem to promote nucleotide exchange activity toward Rac-GTPases, which was uniquely reported in PubMed:9857026. May stimulate instead the cortical activity of Rac. Inactive toward CDC42, TC10, or Ras-GTPases.,online information:ARHGEF2 entry,PTM:Phosphorylation of Ser-886 by PAK1 induces binding to protein 14-3-3 zeta, promoting its relocation to microtubules and the inhibition of its activity. Phosphorylated by STK6 and CDK1 during mitosis, which negatively regulates its activity. Phosphorylation by MAPK1 or MAPK3 increases nucleotide exchange activity. Phosphorylation by PAK4 releases GEF-H1 from the microtubules.,sequence caution:Sequence differs at a large extent from the sequence shown in the paper.,similarity:Contains 1 DH (DBL-homology) domain.,similarity:Contains 1 PH domain.,similarity:Contains 1 phorbol-ester/DAG-type zinc finger.,subcellular location:Localizes to the tips of cortical microtubules of the mitotic spindle during cell division, and is further released upon microtubule depolymerization.,subunit:Interacts with 14-3-3 zeta; when phosphorylated at Ser-886. Interacts with the kinases PAK4, AURKA/STK6 and MAPK1. Interacts with RHOA and RAC1.,

Research Area

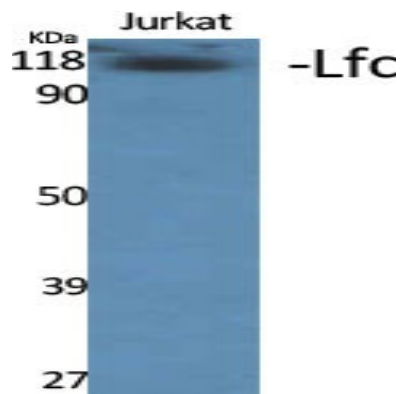
Regulation of Actin Dynamics; AMPK

Image Data

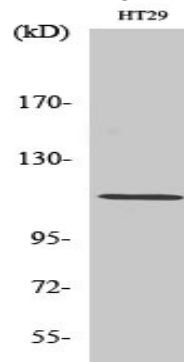


Western blot analysis of lysates from NIH/3T3 cells, using Rho/Rac Guanine Nucleotide Exchange Factor 2 Antibody. The lane on the right is blocked with the synthesized peptide.

Product Name: Lfc Rabbit Polyclonal Antibody
Catalog #: APRab13284



Western Blot analysis of various cells using Lfc Polyclonal Antibody diluted at 1 : 1000



Western Blot analysis of HT29 cells using Lfc Polyclonal Antibody diluted at 1 : 1000

Note

For research use only.