

---

## Summary

|                        |                                    |
|------------------------|------------------------------------|
| <b>Production Name</b> | LDLRAD2 Rabbit Polyclonal Antibody |
| <b>Description</b>     | Rabbit Polyclonal Antibody         |
| <b>Host</b>            | Rabbit                             |
| <b>Application</b>     | WB,ELISA                           |
| <b>Reactivity</b>      | Human,Rat,Mouse                    |

## Performance

|                     |  |
|---------------------|--|
| <b>Conjugation</b>  | Unconjugated   |
| <b>Modification</b> | Unmodified   |
| <b>Isotype</b>      | IgG  |
| <b>Clonality</b>    | Polyclonal   |
| <b>Form</b>         | Liquid   |
| <b>Storage</b>      | Store at 4°C short term. Aliquot and store at -20°C long term. Avoid freeze/thaw cycles. |
| <b>Buffer</b>       | Liquid in PBS containing 50% glycerol, 0.5% BSA and 0.02% New type preservative N.       |
| <b>Purification</b> | Affinity purification  |

## Immunogen

|                          |  |
|--------------------------|--|
| <b>Gene Name</b>         | LDLRAD2  |
| <b>Alternative Names</b> | LDLRAD2; Low-density lipoprotein receptor class A domain-containing protein 2                              |
| <b>Gene ID</b>           | 401944.0   |
| <b>SwissProt ID</b>      | Q5SZI1.The antiserum was produced against synthesized peptide derived from human LDLRAD2. AA range:130-179 |

## Application

|                         |                                |
|-------------------------|--------------------------------|
| <b>Dilution Ratio</b>   | WB 1:500-2000 ELISA 2000-20000 |
| <b>Molecular Weight</b> | 29kD                           |

## Background

---

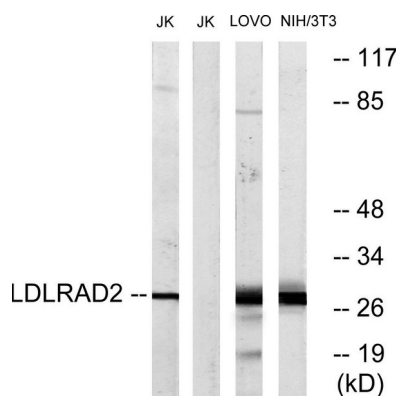
**Product Name: LDLRAD2 Rabbit Polyclonal Antibody**  
**Catalog #: APRab13270**



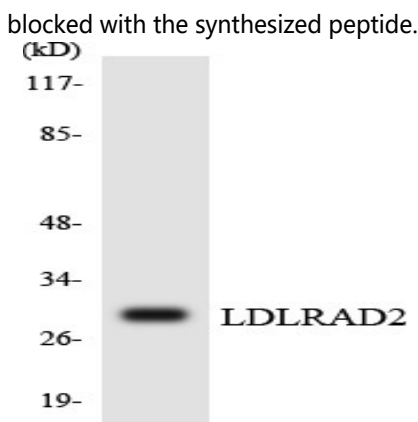
similarity:Belongs to the LDLR family.,similarity:Contains 1 LDL-receptor class A domain.,similarity:Belongs to the LDLR family.,similarity:Contains 1 LDL-receptor class A domain.,

## Research Area

## Image Data



Western blot analysis of lysates from Jurkat, LOVO, and NIH/3T3 cells, using LDLRAD2 Antibody. The lane on the right is blocked with the synthesized peptide.



Western blot analysis of the lysates from HepG2 cells using LDLRAD2 antibody.



Western Blot analysis of various cells using LDLRAD2 Polyclonal Antibody diluted at 1: 500

**Product Name: LDLRAD2 Rabbit Polyclonal Antibody**  
**Catalog #: APRab13270**

---



**Note**

For research use only.