
Summary

Production Name	LDLRAD1 Rabbit Polyclonal Antibody
Description	Rabbit Polyclonal Antibody
Host	Rabbit
Application	WB,ELISA
Reactivity	Human,Rat,Mouse

Performance

Conjugation	Unconjugated
Modification	Unmodified
Isotype	IgG
Clonality	Polyclonal
Form	Liquid
Storage	Store at 4°C short term. Aliquot and store at -20°C long term. Avoid freeze/thaw cycles.
Buffer	Liquid in PBS containing 50% glycerol, 0.5% BSA and 0.02% New type preservative N.
Purification	Affinity purification

Immunogen

Gene Name	LDLRAD1
Alternative Names	LDLRAD1; Low-density lipoprotein receptor class A domain-containing protein 1
Gene ID	388633.0
SwissProt ID	Q5T700.The antiserum was produced against synthesized peptide derived from human LDLRAD1. AA range:84-133

Application

Dilution Ratio	WB 1:500-2000 ELISA 2000-20000
Molecular Weight	26kD

Background

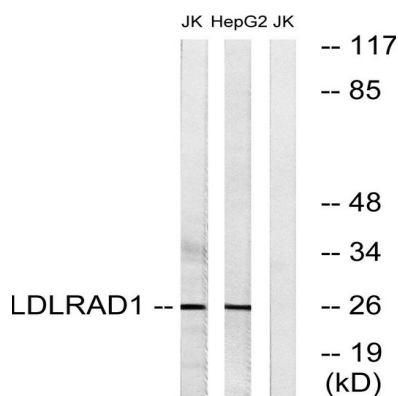
Product Name: LDLRAD1 Rabbit Polyclonal Antibody
Catalog #: APRab13269



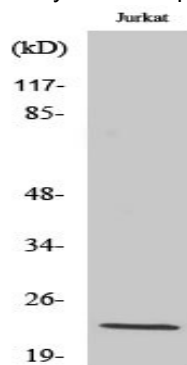
similarity:Belongs to the LDLR family.,similarity:Contains 3 LDL-receptor class A domains.,similarity:Belongs to the LDLR family.,similarity:Contains 3 LDL-receptor class A domains.,

Research Area

Image Data



Western blot analysis of lysates from Jurkat and HepG2 cells, using LDLRAD1 Antibody. The lane on the right is blocked with the synthesized peptide.



Western Blot analysis of various cells using LDLRAD1 Polyclonal Antibody

Note

For research use only.