

Product Name: KLK1 Rabbit Polyclonal Antibody
Catalog #: APRab13070



Summary

Production Name	KLK1 Rabbit Polyclonal Antibody
Description	Rabbit Polyclonal Antibody
Host	Rabbit
Application	WB
Reactivity	Human,Rat,Mouse

Performance

Conjugation	Unconjugated
Modification	Unmodified
Isotype	IgG
Clonality	Polyclonal
Form	Liquid
Storage	Store at 4°C short term. Aliquot and store at -20°C long term. Avoid freeze/thaw cycles.
Buffer	Liquid in PBS containing 50% glycerol, 0.5% BSA and 0.02% New type preservative N.
Purification	Affinity purification

Immunogen

Gene Name	KLK1
Alternative Names	KLK1; Kallikrein-1; Kidney/pancreas/salivary gland kallikrein; Tissue kallikrein
Gene ID	3816.0
SwissProt ID	P06870.The antiserum was produced against synthesized peptide derived from the Internal region of human KLK1. AA range:81-130

Application

Dilution Ratio	WB 1: 500-2000
Molecular Weight	29kD

Background

Kallikreins are a subgroup of serine proteases having diverse physiological functions. Growing evidence suggests that many

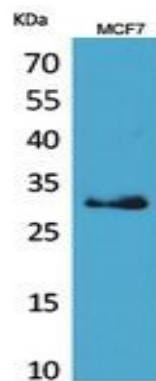
Product Name: KLK1 Rabbit Polyclonal Antibody
Catalog #: APRab13070



kallikreins are implicated in carcinogenesis and some have potential as novel cancer and other disease biomarkers. This gene is one of the fifteen kallikrein subfamily members located in a cluster on chromosome 19. This protein is functionally conserved in its capacity to release the vasoactive peptide, Lys-bradykinin, from low molecular weight kininogen. [provided by RefSeq, Jul 2008],catalytic activity:Preferential cleavage of Arg-|-Xaa bonds in small molecule substrates. Highly selective action to release kallidin (lysyl-bradykinin) from kininogen involves hydrolysis of Met-|-Xaa or Leu-|-Xaa.,function:Glandular kallikreins cleave Met-Lys and Arg-Ser bonds in kininogen to release Lys-bradykinin.,online information:Kallikrein entry,PTM:The O-linked polysaccharides on Ser-93, Ser-104 and Ser-167 are probably the mucin type linked to GalNAc. In PubMed:3163150, GalNAc was detected with the corresponding peptides but not located.,similarity:Belongs to the peptidase S1 family.,similarity:Belongs to the peptidase S1 family. Kallikrein subfamily.,similarity:Contains 1 peptidase S1 domain.,tissue specificity:Isoform 2 is expressed in pancreas, salivary glands, kidney, colon, prostate gland, testis, spleen and the colon adenocarcinoma cell line T84.,

Research Area

Image Data



Western Blot analysis of MCF7 cells using KLK1 Polyclonal Antibody.. Secondary antibody was diluted at 1:20000

Note

For research use only.