

---

## Summary

<b>Production Name</b>	KLHL3 Rabbit Polyclonal Antibody
<b>Description</b>	Rabbit Polyclonal Antibody
<b>Host</b>	Rabbit
<b>Application</b>	WB,IF,IHC,
<b>Reactivity</b>	Human,Rat,Mouse

## Performance

<b>Conjugation</b>	Unconjugated
<b>Modification</b>	Unmodified
<b>Isotype</b>	IgG
<b>Clonality</b>	Polyclonal
<b>Form</b>	Liquid
<b>Storage</b>	Store at 4°C short term. Aliquot and store at -20°C long term. Avoid freeze/thaw cycles.
<b>Buffer</b>	Liquid in PBS containing 50% glycerol, 0.5% BSA and 0.02% New type preservative N.
<b>Purification</b>	Affinity purification

## Immunogen

<b>Gene Name</b>	KLHL3
<b>Alternative Names</b>	KLHL3; KIAA1129; Kelch-like protein 3
<b>Gene ID</b>	26249.0
<b>SwissProt ID</b>	Q9UH77.The antiserum was produced against synthesized peptide derived from human KLHL3. AA range:10-59

## Application

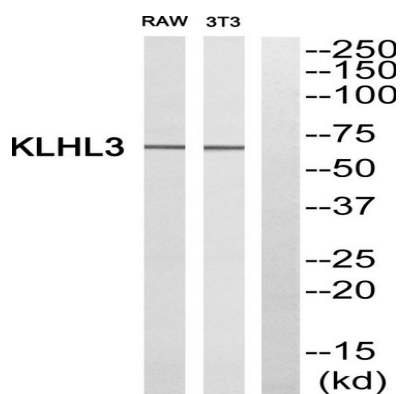
<b>Dilution Ratio</b>	WB 1:500 - 1:2000. IF 1:200 - 1:1000. IHC 1:100 - 1:300. ELISA: 1:20000. Not yet tested in other applications.
<b>Molecular Weight</b>	65kD

## Background

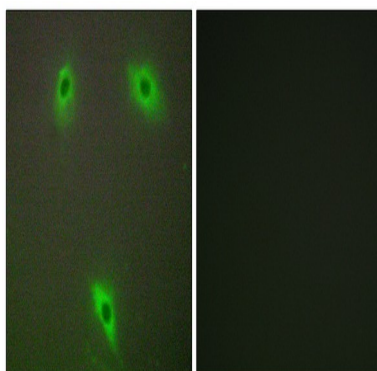
This gene is ubiquitously expressed and encodes a full-length protein which has an N-terminal BTB domain followed by a BACK domain and six kelch-like repeats in the C-terminus. These kelch-like repeats promote substrate ubiquitination of bound proteins via interaction of the BTB domain with the CUL3 (cullin 3) component of a cullin-RING E3 ubiquitin ligase (CRL) complex. Mutations in this gene cause pseudohypoadosteronism type IID (PHA2D); a rare Mendelian syndrome featuring hypertension, hyperkalaemia and metabolic acidosis. Alternative splicing results in multiple transcript variants encoding distinct isoforms. [provided by RefSeq, Mar 2012],function:Probable substrate-specific adapter of an E3 ubiquitin-protein ligase complex which mediates the ubiquitination and subsequent proteasomal degradation of target proteins.,pathway:Protein modification; protein ubiquitination.,similarity:Contains 1 BTB (POZ) domain.,similarity:Contains 6 Kelch repeats.,subunit:Interacts with cul3.,tissue specificity:Seems to be expressed in a variety of tissues.,

## Research Area

## Image Data

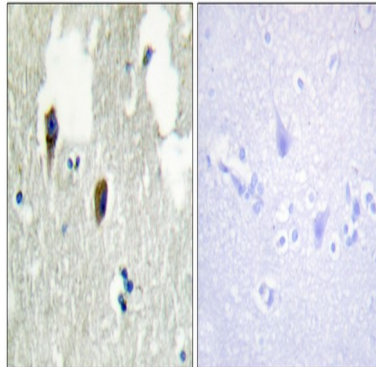


Western blot analysis of KLHL3 Antibody. The lane on the right is blocked with the KLHL3 peptide.

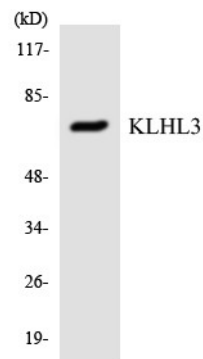


Immunofluorescence analysis of A549 cells, using KLHL3 Antibody. The picture on the right is blocked with the synthesized peptide.

**Product Name: KLHL3 Rabbit Polyclonal Antibody**  
**Catalog #: APRab13069**



Immunohistochemistry analysis of paraffin-embedded human brain tissue, using KLHL3 Antibody. The picture on the right is blocked with the synthesized peptide.



Western blot analysis of the lysates from COLO205 cells using KLHL3 antibody.

## **Note**

For research use only.