

**Product Name: KLHL29 Rabbit Polyclonal Antibody**  
**Catalog #: APRab13068**



## Summary

<b>Production Name</b>	KLHL29 Rabbit Polyclonal Antibody
<b>Description</b>	Rabbit Polyclonal Antibody
<b>Host</b>	Rabbit
<b>Application</b>	IHC,ELISA
<b>Reactivity</b>	Human,Mouse

## Performance

<b>Conjugation</b>	Unconjugated
<b>Modification</b>	Unmodified
<b>Isotype</b>	IgG
<b>Clonality</b>	Polyclonal
<b>Form</b>	Liquid
<b>Storage</b>	Store at 4°C short term. Aliquot and store at -20°C long term. Avoid freeze/thaw cycles.
<b>Buffer</b>	Liquid in PBS containing 50% glycerol, 0.5% BSA and 0.02% New type preservative N.
<b>Purification</b>	Affinity purification

## Immunogen

<b>Gene Name</b>	KLHL29
<b>Alternative Names</b>	KLHL29; KBTBD9; KIAA1921; Kelch-like protein 29; Kelch repeat and BTB domain-containing protein 9
<b>Gene ID</b>	114818.0
<b>SwissProt ID</b>	Q96CT2.The antiserum was produced against synthesized peptide derived from human KLHL29. AA range:261-310

## Application

<b>Dilution Ratio</b>	IHC 1:100-1:300 ELISA: 1:40000
<b>Molecular Weight</b>	

## Background

**Product Name: KLHL29 Rabbit Polyclonal Antibody**  
**Catalog #: APRab13068**

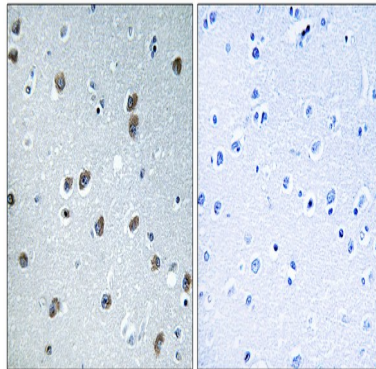


---

caution:Although the complete sequence is not known with certainty, sequence shown here appears to be the most probable in accordance with the mouse sequence ortholog.,similarity:Contains 1 BTB (POZ) domain.,similarity:Contains 6 Kelch repeats.,caution:Although the complete sequence is not known with certainty, sequence shown here appears to be the most probable in accordance with the mouse sequence ortholog.,similarity:Contains 1 BTB (POZ) domain.,similarity:Contains 6 Kelch repeats.,

## Research Area

## Image Data



Immunohistochemistry analysis of paraffin-embedded human brain tissue, using KLHL29 Antibody. The picture on the right is blocked with the synthesized peptide.

## Note

For research use only.