

Product Name: KLF7 Rabbit Polyclonal Antibody
Catalog #: APRab13063



Summary

Production Name	KLF7 Rabbit Polyclonal Antibody
Description	Rabbit Polyclonal Antibody
Host	Rabbit
Application	WB
Reactivity	Human,Mouse

Performance

Conjugation	Unconjugated
Modification	Unmodified
Isotype	IgG
Clonality	Polyclonal
Form	Liquid
Storage	Store at 4°C short term. Aliquot and store at -20°C long term. Avoid freeze/thaw cycles.
Buffer	Liquid in PBS containing 50% glycerol, 0.5% BSA and 0.02% New type preservative N.
Purification	Affinity purification

Immunogen

Gene Name	KLF7
Alternative Names	KLF7; UKLF; Krueppel-like factor 7; Ubiquitous krueppel-like factor
Gene ID	8609.0
SwissProt ID	O75840.The antiserum was produced against synthesized peptide derived from human KLF7. AA range:171-220

Application

Dilution Ratio	WB 1:500-2000
Molecular Weight	41kD

Background

The protein encoded by this gene is a member of the Kruppel-like transcriptional regulator family. Members in this family

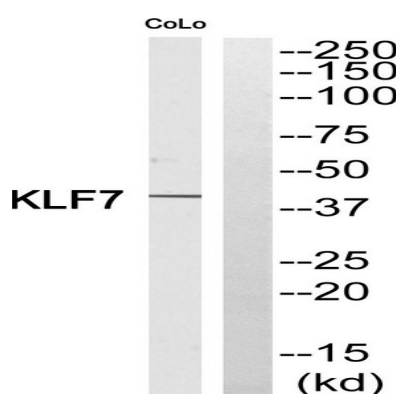
Product Name: KLF7 Rabbit Polyclonal Antibody
Catalog #: APRab13063



regulate cell proliferation, differentiation and survival and contain three C2H2 zinc fingers at the C-terminus that mediate binding to GC-rich sites. This protein may contribute to the progression of type 2 diabetes by inhibiting insulin expression and secretion in pancreatic beta-cells and by deregulating adipocytokine secretion in adipocytes. A pseudogene of this gene is located on the long arm of chromosome 3. Alternative splicing results in multiple transcript variants. [provided by RefSeq, Aug 2012],domain:The acidic N-terminal part may favor interaction with the basic domain of transcription factors.,function:Transcriptional activator. Binds in vitro to the CACCC motif of the beta-globin promoter and to the SP1 recognition sequence.,similarity:Belongs to the krueppel C2H2-type zinc-finger protein family.,similarity:Contains 3 C2H2-type zinc fingers.,tissue specificity:Ubiquitous and highly expressed in brain and spinal cord in the adult, and in kidney and brain in the embryo.,

Research Area

Image Data



Western blot analysis of KLF7 Antibody. The lane on the right is blocked with the KLF7 peptide.

Note

For research use only.