

Product Name: KKIAMRE Rabbit Polyclonal Antibody
Catalog #: APRab13044



Summary

Production Name	KKIAMRE Rabbit Polyclonal Antibody
Description	Rabbit Polyclonal Antibody
Host	Rabbit
Application	WB
Reactivity	Human,Rat,Mouse

Performance

Conjugation	Unconjugated
Modification	Unmodified
Isotype	IgG
Clonality	Polyclonal
Form	Liquid
Storage	Store at 4°C short term. Aliquot and store at -20°C long term. Avoid freeze/thaw cycles.
Buffer	Liquid in PBS containing 50% glycerol, 0.5% BSA and 0.02% New type preservative N.
Purification	Affinity purification

Immunogen

Gene Name	CDKL2
Alternative Names	CDKL2; Cyclin-dependent kinase-like 2; Protein kinase p56 KKIAMRE; Serine/threonine-protein kinase KKIAMRE
Gene ID	8999.0
SwissProt ID	Q92772.The antiserum was produced against synthesized peptide derived from human CDKL2. AA range:211-260

Application

Dilution Ratio	WB 1:500-1:2000. ELISA: 1:10000.
Molecular Weight	56kD

Background

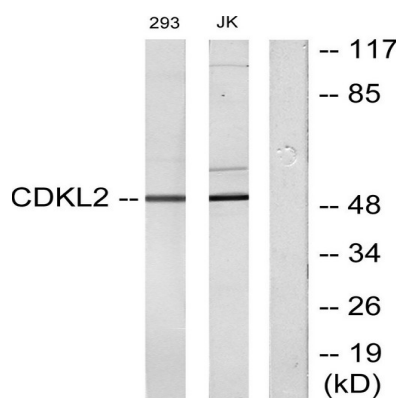
Product Name: KKIAMRE Rabbit Polyclonal Antibody
Catalog #: APRab13044



This gene product is a member of a large family of CDC2-related serine/threonine protein kinases. It accumulates primarily in the cytoplasm, with lower levels in the nucleus. [provided by RefSeq, Jul 2008],catalytic activity:ATP + a protein = ADP + a phosphoprotein.,domain:The [NKR]KIAxRE motif seems to be a cyclin-binding region.,similarity:Belongs to the protein kinase superfamily. CMGC Ser/Thr protein kinase family. CDC2/CDKX subfamily.,similarity:Contains 1 protein kinase domain.,tissue specificity:Expressed in testis and kidney, and at lower level in brain and lung.,

Research Area

Image Data



Western blot analysis of lysates from Jurkat and 293 cells, using CDKL2 Antibody. The lane on the right is blocked with the synthesized peptide.

Note

For research use only.