

Summary

Production Name	KIAA0100 Rabbit Polyclonal Antibody
Description	Rabbit Polyclonal Antibody
Host	Rabbit
Application	IHC,ELISA
Reactivity	Human,Rat,Mouse

Performance

Conjugation	Unconjugated
Modification	Unmodified
Isotype	IgG
Clonality	Polyclonal
Form	Liquid
Storage	Store at 4°C short term. Aliquot and store at -20°C long term. Avoid freeze/thaw cycles.
Buffer	Liquid in PBS containing 50% glycerol, 0.5% BSA and 0.02% New type preservative N.
Purification	Affinity purification

Immunogen

Gene Name	KIAA0100
Alternative Names	KIAA0100; BCOX1; UPF0378 protein KIAA0100; Antigen MLAA-22; Breast cancer-overexpressed gene 1 protein
Gene ID	9703.0
SwissProt ID	Q14667.The antiserum was produced against synthesized peptide derived from human KIAA0100. AA range:681-730

Application

Dilution Ratio	IHC 1:100-1:300 ELISA: 1:20000
Molecular Weight	

Background

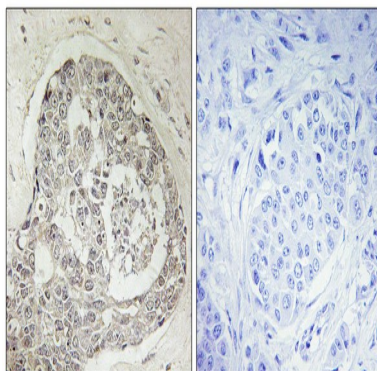
Product Name: KIAA0100 Rabbit Polyclonal Antibody
Catalog #: APRab13004



sequence caution:Contaminating sequence.,sequence caution:Sequencing errors.,similarity:Belongs to the UPF0378 family.,tissue specificity:Expressed in pancreas, placenta and up-regulated in breast carcinoma epithelial cells, ductal in situ carcinoma (DCIS), invasive breast carcinoma (IBC) and metastatic breast carcinoma cells (MET).,sequence caution:Contaminating sequence.,sequence caution:Sequencing errors.,similarity:Belongs to the UPF0378 family.,tissue specificity:Expressed in pancreas, placenta and up-regulated in breast carcinoma epithelial cells, ductal in situ carcinoma (DCIS), invasive breast carcinoma (IBC) and metastatic breast carcinoma cells (MET).,

Research Area

Image Data



Immunohistochemistry analysis of paraffin-embedded human breast carcinoma, using K0100 Antibody. The picture on the right is blocked with the synthesized peptide.

Note

For research use only.