

Product Name: KI2LA Rabbit Polyclonal Antibody
Catalog #: APRab12997



Summary

Production Name	KI2LA Rabbit Polyclonal Antibody
Description	Rabbit Polyclonal Antibody
Host	Rabbit
Application	WB
Reactivity	Human,Rat,Mouse

Performance

Conjugation	Unconjugated
Modification	Unmodified
Isotype	IgG
Clonality	Polyclonal
Form	Liquid
Storage	Store at 4°C short term. Aliquot and store at -20°C long term. Avoid freeze/thaw cycles.
Buffer	Liquid in PBS containing 50% glycerol, and 0.02% New type preservative N.
Purification	Affinity purification

Immunogen

Gene Name	KIR2DL5A CD158F CD158F1 KIR2DL5
Alternative Names	
Gene ID	57292.0
SwissProt ID	Q8N109.Synthesized peptide derived from part region of human protein

Application

Dilution Ratio	WB 1:500-2000 ELISA 1:5000-20000
Molecular Weight	41kD

Background

killer cell immunoglobulin like receptor, two Ig domains and long cytoplasmic tail 5A(KIR2DL5A) Homo sapiens Killer cell immunoglobulin-like receptors (KIRs) are transmembrane glycoproteins expressed by natural killer cells and subsets of T

Product Name: KI2LA Rabbit Polyclonal Antibody
Catalog #: APRab12997

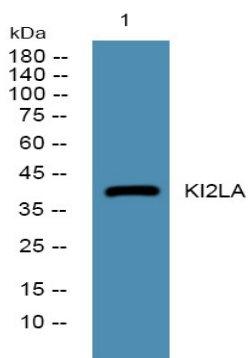


cells. The KIR genes are polymorphic and highly homologous and they are found in a cluster on chromosome 19q13.4 within the 1 Mb leukocyte receptor complex (LRC). The gene content of the KIR gene cluster varies among haplotypes, although several "framework" genes are found in all haplotypes (KIR3DL3, KIR3DP1, KIR3DL4, KIR3DL2). The KIR proteins are classified by the number of extracellular immunoglobulin domains (2D or 3D) and by whether they have a long (L) or short (S) cytoplasmic domain. KIR proteins with the long cytoplasmic domain transduce inhibitory signals upon ligand binding via an immune tyrosine-based inhibitory motif (ITIM), while KIR proteins with the short cytoplasmic domain lack the function: Receptor on natural killer (NK) cells for HLA-C alleles. Inhibits the activity of NK cells thus preventing cell lysis., similarity: Belongs to the immunoglobulin superfamily., similarity: Contains 2 Ig-like C2-type (immunoglobulin-like) domains.,

Research Area

Antigen processing and presentation; Natural killer cell mediated cytotoxicity; Graft-versus-host disease;

Image Data



Western blot analysis of lysates from PC12 cells, primary antibody was diluted at 1:1000, 4° over night

Note

For research use only.