
Summary

Production Name	KG19 Rabbit Polyclonal Antibody
Description	Rabbit Polyclonal Antibody
Host	Rabbit
Application	WB,IHC,ELISA
Reactivity	Human,Mouse

Performance

Conjugation	Unconjugated
Modification	Unmodified
Isotype	IgG
Clonality	Polyclonal
Form	Liquid
Storage	Store at 4°C short term. Aliquot and store at -20°C long term. Avoid freeze/thaw cycles.
Buffer	Liquid in PBS containing 50% glycerol, 0.5% BSA and 0.02% New type preservative N.
Purification	Affinity purification

Immunogen

Gene Name	BRI3BP
Alternative Names	BRI3BP; KG19; BRI3-binding protein; I3-binding protein; Cervical cancer 1 proto-oncogene-binding protein KG19; HCCRBP-1
Gene ID	140707.0
SwissProt ID	Q8WY22.The antiserum was produced against synthesized peptide derived from human BRI3B. AA range:1-50

Application

Dilution Ratio	WB 1:500 - 1:2000. IHC 1:100 - 1:300. ELISA: 1:20000. Not yet tested in other applications.
Molecular Weight	27kD

Product Name: KG19 Rabbit Polyclonal Antibody
Catalog #: APRab12986

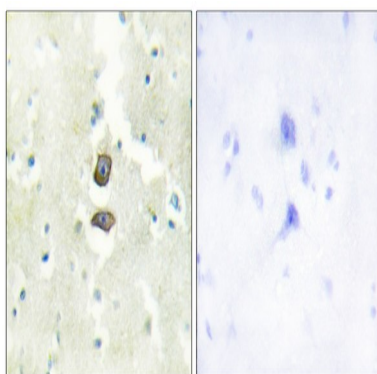


Background

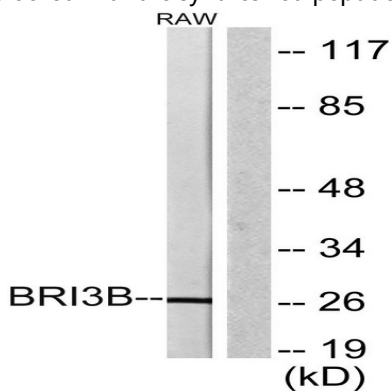
tissue specificity: Most abundantly expressed in brain, liver and kidney., tissue specificity: Most abundantly expressed in brain, liver and kidney.,

Research Area

Image Data



Immunohistochemistry analysis of paraffin-embedded human brain tissue, using BRI3B Antibody. The picture on the right is blocked with the synthesized peptide.



Western blot analysis of lysates from RAW264.7 cells, using BRI3B Antibody. The lane on the right is blocked with the synthesized peptide.

Note

For research use only.