

## Summary

<b>Production Name</b>	Keap1 Rabbit Polyclonal Antibody
<b>Description</b>	Rabbit Polyclonal Antibody
<b>Host</b>	Rabbit
<b>Application</b>	WB,IHC,ELISA
<b>Reactivity</b>	Human,Mouse,Rat

## Performance

<b>Conjugation</b>	Unconjugated
<b>Modification</b>	Unmodified
<b>Isotype</b>	IgG
<b>Clonality</b>	Polyclonal
<b>Form</b>	Liquid
<b>Storage</b>	Store at 4°C short term. Aliquot and store at -20°C long term. Avoid freeze/thaw cycles.
<b>Buffer</b>	Liquid in PBS containing 50% glycerol, 0.5% BSA and 0.02% New type preservative N.
<b>Purification</b>	Affinity purification

## Immunogen

<b>Gene Name</b>	KEAP1
<b>Alternative Names</b>	KEAP1; INRF2; KIAA0132; KLHL19; Kelch-like ECH-associated protein 1; Cytosolic inhibitor of Nrf2; INrf2; Kelch-like protein 19
<b>Gene ID</b>	9817.0
<b>SwissProt ID</b>	Q14145.The antiserum was produced against synthesized peptide derived from the Internal region of human KEAP1. AA range:411-460

## Application

<b>Dilution Ratio</b>	WB 1:500 - 1:2000. IHC: 1:100-300 ELISA: 1:20000..
<b>Molecular Weight</b>	70kD

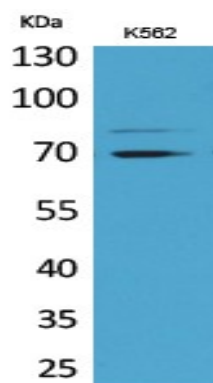
## Background

This gene encodes a protein containing KELCH-1 like domains, as well as a BTB/POZ domain. Kelch-like ECH-associated protein 1 interacts with NF-E2-related factor 2 in a redox-sensitive manner and the dissociation of the proteins in the cytoplasm is followed by transportation of NF-E2-related factor 2 to the nucleus. This interaction results in the expression of the catalytic subunit of gamma-glutamylcysteine synthetase. Two alternatively spliced transcript variants encoding the same isoform have been found for this gene. [provided by RefSeq, Jul 2008],disease:Defects in KEAP1 may be a cause of breast cancer.,disease:Defects in KEAP1 may be involved in non small cell lung carcinomas (NSCLC) and lung adenocarcinoma.,domain:The Kelch repeats mediate interaction with NF2L2/NRF2, BPTF and PGAM5.,enzyme regulation:Ubiquitination and subsequent degradation of PGAM5 is inhibited by oxidative stress and sulforaphane.,function:Retains NFE2L2/NRF2 in the cytosol. Functions as substrate adapter protein for the E3 ubiquitin ligase complex formed by CUL3 and RBX1. Targets NFE2L2/NRF2 for ubiquitination and degradation by the proteasome, thus resulting in the suppression of its transcriptional activity and the repression of antioxidant response element-mediated detoxifying enzyme gene expression. May also retain BPTF in the cytosol. Targets PGAM5 for ubiquitination and degradation by the proteasome.,PTM:Ubiquitinated and subject to proteasomal degradation.,similarity:Contains 1 BACK (BTB/Kelch associated) domain.,similarity:Contains 1 BTB (POZ) domain.,similarity:Contains 6 Kelch repeats.,subcellular location:Shuttles between cytoplasm and nucleus.,subunit:Homodimer. Interacts with the N-terminal regulatory domain of NF2L2/NRF2. Interacts with BPTF and PTMA. Interacts with CUL3. Part of a complex that contains KEAP1, CUL3 and RBX1. Interacts with PGAM5.,tissue specificity:Broadly expressed, with highest levels in skeletal muscle.,

## Research Area

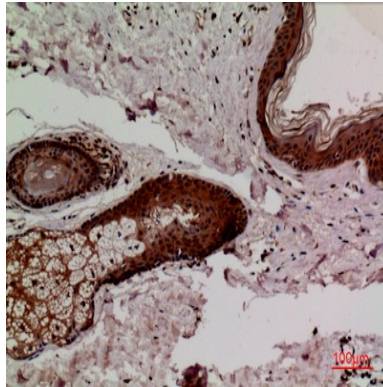
Ubiquitin mediated proteolysis;

## Image Data

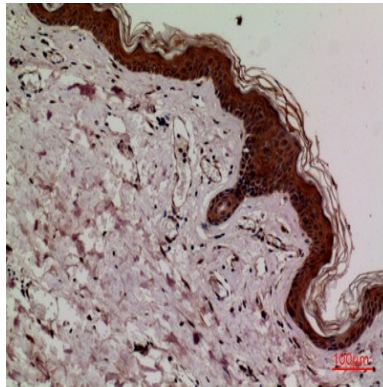


Western Blot analysis of K562 cells using Keap1 Polyclonal Antibody. Antibody was diluted at 1:1000. Secondary antibody was diluted at 1:20000

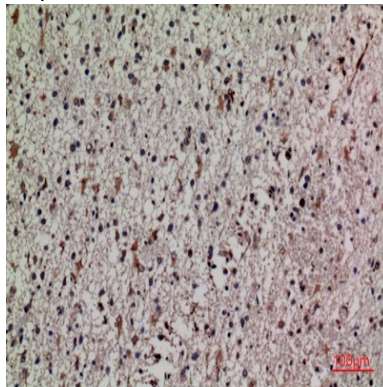
**Product Name: Keap1 Rabbit Polyclonal Antibody**  
**Catalog #: APRab12977**



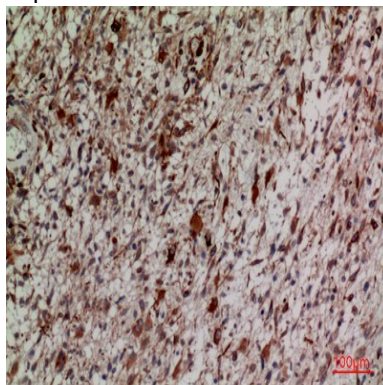
Immunohistochemical analysis of paraffin-embedded human-skin, antibody was diluted at 1:100



Immunohistochemical analysis of paraffin-embedded human-skin, antibody was diluted at 1:100



Immunohistochemical analysis of paraffin-embedded human-brain, antibody was diluted at 1:100



**Product Name: Keap1 Rabbit Polyclonal Antibody**  
**Catalog #: APRab12977**



---

Immunohistochemical analysis of paraffin-embedded human-brain, antibody was diluted at 1:100

**Note**

For research use only.