

Summary

Production Name	Kallistatin Rabbit Polyclonal Antibody
Description	Rabbit Polyclonal Antibody
Host	Rabbit
Application	WB,IHC,
Reactivity	Human,Rat,Mouse

Performance

Conjugation	Unconjugated
Modification	Unmodified
Isotype	IgG
Clonality	Polyclonal
Form	Liquid
Storage	Store at 4°C short term. Aliquot and store at -20°C long term. Avoid freeze/thaw cycles.
Buffer	Liquid in PBS containing 50% glycerol, 0.5% BSA and 0.02% New type preservative N.
Purification	Affinity purification

Immunogen

Gene Name	SERPINA4
Alternative Names	SERPINA4; KST; PI4; Kallistatin; Kallikrein inhibitor; Peptidase inhibitor 4; PI-4; Serpin A4
Gene ID	5267.0
SwissProt ID	P29622.The antiserum was produced against synthesized peptide derived from the Internal region of human SERPINA4. AA range:161-210

Application

Dilution Ratio	WB 1:500 - 1:2000 IHC 1:100 - 1:300. ELISA: 1:20000..
Molecular Weight	47kD

Background

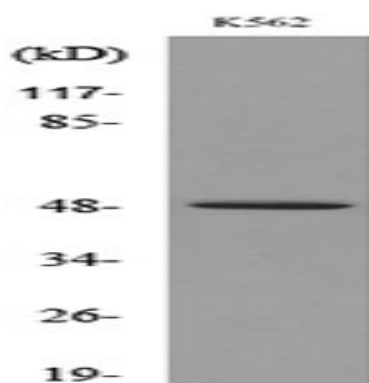
Product Name: Kallistatin Rabbit Polyclonal Antibody
Catalog #: APRab12891



function:Inhibits human amidolytic and kininogenase activities of tissue kallikrein. Inhibition is achieved by formation of an equimolar, heat- and SDS-stable complex between the inhibitor and the enzyme, and generation of a small C-terminal fragment of the inhibitor due to cleavage at the reactive site by tissue kallikrein.,miscellaneous:Heparin blocks kallistatin's complex formation with tissue kallikrein and abolishes its inhibitory effect on tissue kallikrein's activity.,PTM:The N-terminus is blocked.,similarity:Belongs to the serpin family.,subunit:Monomer and some homodimers.,tissue specificity:Expressed by the liver and secreted in plasma.,function:Inhibits human amidolytic and kininogenase activities of tissue kallikrein. Inhibition is achieved by formation of an equimolar, heat- and SDS-stable complex between the inhibitor and the enzyme, and generation of a small C-terminal fragment of the inhibitor due to cleavage at the reactive site by tissue kallikrein.,miscellaneous:Heparin blocks kallistatin's complex formation with tissue kallikrein and abolishes its inhibitory effect on tissue kallikrein's activity.,PTM:The N-terminus is blocked.,similarity:Belongs to the serpin family.,subunit:Monomer and some homodimers.,tissue specificity:Expressed by the liver and secreted in plasma.,

Research Area

Image Data

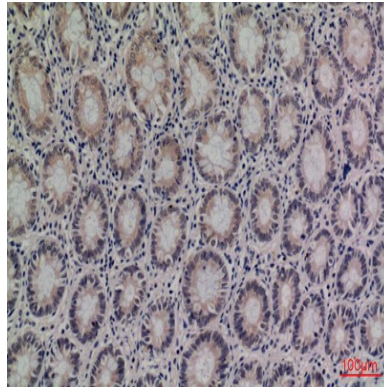


Western blot analysis of lysate from K562 cells, using SERPINA4 Antibody.

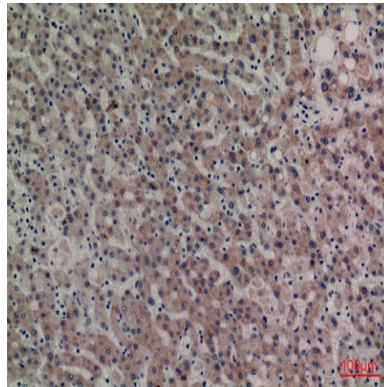


Western Blot analysis of K562 cells using Kallistatin Polyclonal Antibody.. Secondary antibody was diluted at 1:20000

Product Name: Kallistatin Rabbit Polyclonal Antibody
Catalog #: APRab12891



Immunohistochemical analysis of paraffin-embedded human-colon, antibody was diluted at 1:100



Immunohistochemical analysis of paraffin-embedded human-liver, antibody was diluted at 1:100

Note

For research use only.