

**Product Name: K1H2 Rabbit Polyclonal Antibody**  
**Catalog #: APRab12878**



## Summary

<b>Production Name</b>	K1H2 Rabbit Polyclonal Antibody
<b>Description</b>	Rabbit Polyclonal Antibody
<b>Host</b>	Rabbit
<b>Application</b>	WB
<b>Reactivity</b>	Human,Rat,Mouse

## Performance

<b>Conjugation</b>	Unconjugated
<b>Modification</b>	Unmodified
<b>Isotype</b>	IgG
<b>Clonality</b>	Polyclonal
<b>Form</b>	Liquid
<b>Storage</b>	Store at 4°C short term. Aliquot and store at -20°C long term. Avoid freeze/thaw cycles.
<b>Buffer</b>	Liquid in PBS containing 50% glycerol, and 0.02% New type preservative N.
<b>Purification</b>	Affinity purification

## Immunogen

<b>Gene Name</b>	KRT32 HHA2 HKA2 KRTHA2
<b>Alternative Names</b>	
<b>Gene ID</b>	3882.0
<b>SwissProt ID</b>	Q14532.Synthesized peptide derived from human protein . at AA range: 220-300

## Application

<b>Dilution Ratio</b>	WB 1:500-2000 ELISA 1:5000-20000
<b>Molecular Weight</b>	49kD

## Background

The protein encoded by this gene is a member of the keratin gene family. As a type I hair keratin, it is an acidic protein which heterodimerizes with type II keratins to form hair and nails. The type I hair keratins are clustered in a region of

**Product Name: K1H2 Rabbit Polyclonal Antibody**  
**Catalog #: APRab12878**

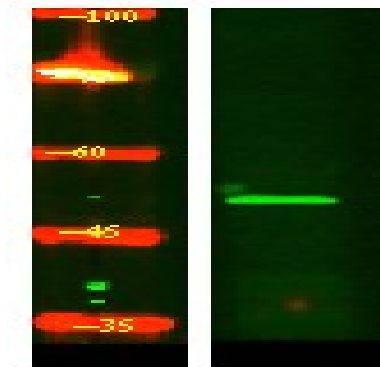


---

chromosome 17q12-q21 and have the same direction of transcription. [provided by RefSeq, Jul 2008],miscellaneous:There are two types of hair/microfibrillar keratin, I (acidic) and II (neutral to basic),similarity:Belongs to the intermediate filament family.,tissue specificity:Restricted to the hair cuticle.,

## Research Area

## Image Data



Western Blot analysis of Hela lysis, using primary antibody at 1:1000 dilution. Secondary antibody was diluted at 1:10000

## Note

For research use only.