

Product Name: JTB Rabbit Polyclonal Antibody
Catalog #: APRab12851



Summary

Production Name	JTB Rabbit Polyclonal Antibody
Description	Rabbit Polyclonal Antibody
Host	Rabbit
Application	WB,
Reactivity	Human,Rat,Mouse

Performance

Conjugation	Unconjugated
Modification	Unmodified
Isotype	IgG
Clonality	Polyclonal
Form	Liquid
Storage	Store at 4°C short term. Aliquot and store at -20°C long term. Avoid freeze/thaw cycles.
Buffer	Liquid in PBS containing 50% glycerol, 0.5% BSA and 0.02% New type preservative N.
Purification	Affinity purification

Immunogen

Gene Name	JTB
Alternative Names	JTB; HSPC222; Protein JTB; Jumping translocation breakpoint protein; Prostate androgen-regulated protein; PAR protein
Gene ID	10899.0
SwissProt ID	O76095.The antiserum was produced against synthesized peptide derived from human JTB. AA range:10-59

Application

Dilution Ratio	WB 1:500-2000
Molecular Weight	17kD

Product Name: JTB Rabbit Polyclonal Antibody
Catalog #: APRab12851

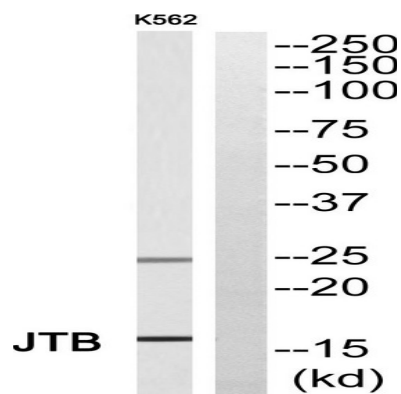


Background

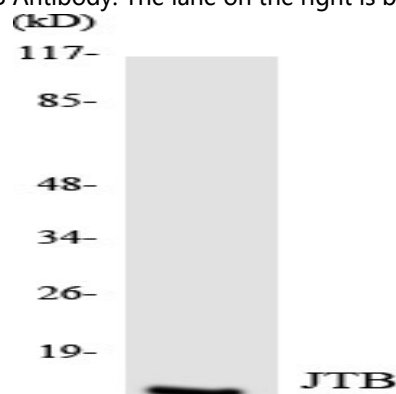
similarity:Belongs to the JTB family.,tissue specificity:Expressed in all normal human tissues studied but overexpressed in most of their malignant counterparts.,similarity:Belongs to the JTB family.,tissue specificity:Expressed in all normal human tissues studied but overexpressed in most of their malignant counterparts.,

Research Area

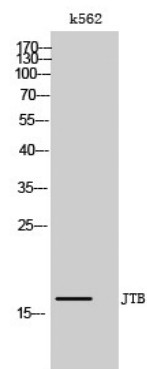
Image Data



Western blot analysis of JTB Antibody. The lane on the right is blocked with the JTB peptide.



Western blot analysis of the lysates from HUVEC cells using JTB antibody.



Product Name: JTB Rabbit Polyclonal Antibody
Catalog #: APRab12851



Western Blot analysis of k562 cells using JTB Polyclonal Antibody

Note

For research use only.