
Summary

Production Name	JAB1 Rabbit Polyclonal Antibody
Description	Rabbit Polyclonal Antibody
Host	Rabbit
Application	WB,IHC,IF,ELISA
Reactivity	Human,Mouse

Performance

Conjugation	Unconjugated
Modification	Unmodified
Isotype	IgG
Clonality	Polyclonal
Form	Liquid
Storage	Store at 4°C short term. Aliquot and store at -20°C long term. Avoid freeze/thaw cycles.
Buffer	Liquid in PBS containing 50% glycerol, 0.5% BSA and 0.02% New type preservative N.
Purification	Affinity purification

Immunogen

Gene Name	COPS5
Alternative Names	COPS5; CSN5; JAB1; COP9 signalosome complex subunit 5; SGN5; Signalosome subunit 5; Jun activation domain-binding protein 1
Gene ID	10987.0
SwissProt ID	Q92905.The antiserum was produced against synthesized peptide derived from human COPS5. AA range:161-210

Application

Dilution Ratio	WB 1:500 - 1:2000. IHC 1:100 - 1:300. ELISA: 1:5000.. IF 1:50-200
Molecular Weight	38kD

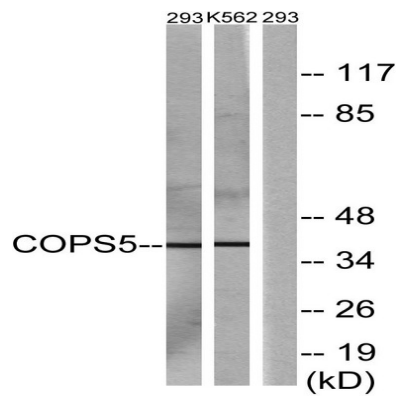
Background

The protein encoded by this gene is one of the eight subunits of COP9 signalosome, a highly conserved protein complex that functions as an important regulator in multiple signaling pathways. The structure and function of COP9 signalosome is similar to that of the 19S regulatory particle of 26S proteasome. COP9 signalosome has been shown to interact with SCF-type E3 ubiquitin ligases and act as a positive regulator of E3 ubiquitin ligases. This protein is reported to be involved in the degradation of cyclin-dependent kinase inhibitor CDKN1B/p27Kip1. It is also known to be an coactivator that increases the specificity of JUN/AP1 transcription factors. [provided by RefSeq, Jul 2008],cofactor:Divalent metal ions.,domain:The JAMM motif is essential for the protease activity of the CSN complex resulting in deneddylation of cullins. It constitutes the catalytic center of the complex.,function:Probable protease subunit of the COP9 signalosome complex (CSN), a complex involved in various cellular and developmental processes. The CSN complex is an essential regulator of the ubiquitin (Ubl) conjugation pathway by mediating the deneddylation of the cullin subunits of the SCF-type E3 ligase complexes, leading to decrease the Ubl ligase activity of SCF-type complexes such as SCF, CSA or DDB2. The complex is also involved in phosphorylation of p53/TP53, c-jun/JUN, IkkappaBalph/NFKBIA, ITPK1 and ICSBP, possibly via its association with CK2 and PKD kinases. CSN-dependent phosphorylation of TP53 and JUN promotes and protects degradation by the Ubl system, respectively. In the complex, it probably acts as the catalytic center that mediates the cleavage of Nedd8 from cullins. It however has no metalloprotease activity by itself and requires the other subunits of the CSN complex. Interacts directly with a large number of proteins that are regulated by the CSN complex, confirming a key role in the complex.,miscellaneous:The CSN complex is associated with some 'Lys-63'-specific deubiquitination. Such activity is however not mediated by the core CSN complex but by the BRCC3/BRCC36 component of the BRISC complex.,similarity:Belongs to the peptidase M67A family. CSN5 subfamily.,similarity:Contains 1 MPN (JAB/Mov34) domain.,subunit:Component of the CSN complex, composed of COPS1/GPS1, COPS2, COPS3, COPS4, COPS5, COP6, COPS7 (COPS7A or COPS7B) and COPS8. In the complex, it probably interacts directly with COPS1, COPS2, COPS4, COPS6 and COPS7 (COPS7A or COPS7B). The CSN complex interacts with the BRISC complex. Also exists as monomeric form. Interacts with TP53, MIF, JUN, UCHL1, NCOA1, HIF1A, CDKN1B, BCL3, GFER, PGR, LHCGR, SMAD4, SMAD7, ID1, ID3, ITGB2 and TOP2A. Part of a complex consisting of RANBP9, Ran, DYRK1B and COPS5.,

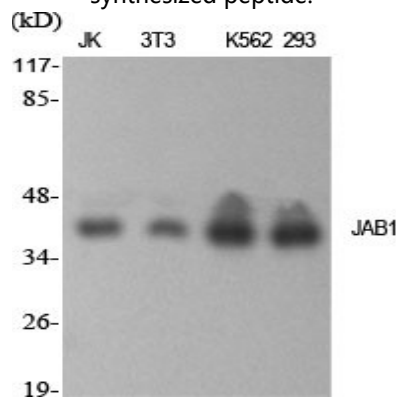
Research Area

Image Data

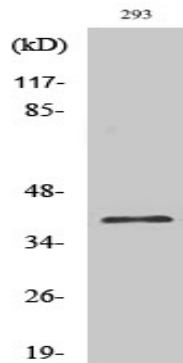
Product Name: JAB1 Rabbit Polyclonal Antibody
Catalog #: APRab12809



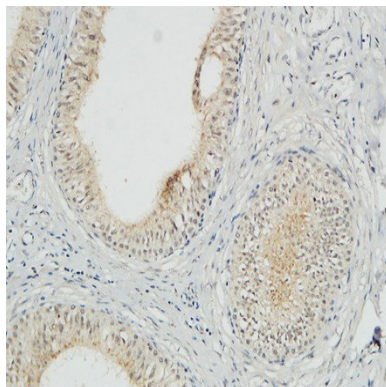
Western blot analysis of lysates from 293 and K562 cells, using COPS5 Antibody. The lane on the right is blocked with the synthesized peptide.



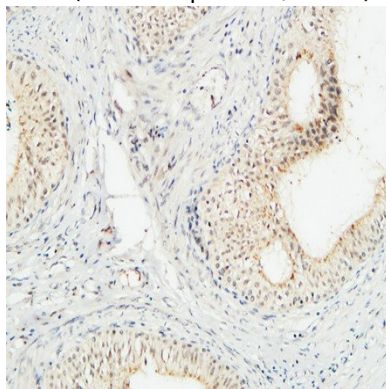
Western Blot analysis of various cells using JAB1 Polyclonal Antibody



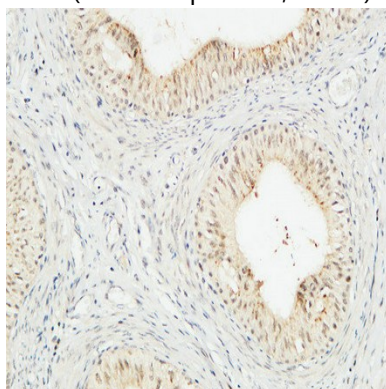
Western Blot analysis of K562 cells using JAB1 Polyclonal Antibody



Immunohistochemical analysis of paraffin-embedded Human testis. 1, Antibody was diluted at 1:100 (4°,overnight) . 2, High-pressure and temperature EDTA, pH8.0 was used for antigen retrieval. 3,Secondary antibody was diluted at 1:200 (room temperature, 30min) .



Immunohistochemical analysis of paraffin-embedded Human testis. 1, Antibody was diluted at 1:100 (4°,overnight) . 2, High-pressure and temperature EDTA, pH8.0 was used for antigen retrieval. 3,Secondary antibody was diluted at 1:200 (room temperature, 30min) .



Immunohistochemical analysis of paraffin-embedded Human testis. 1, Antibody was diluted at 1:100 (4°,overnight) . 2, High-pressure and temperature EDTA, pH8.0 was used for antigen retrieval. 3,Secondary antibody was diluted at 1:200 (room temperature, 30min) .

Product Name: JAB1 Rabbit Polyclonal Antibody
Catalog #: APRab12809



Note

For research use only.