

## Summary

<b>Production Name</b>	IRX1 Rabbit Polyclonal Antibody
<b>Description</b>	Rabbit Polyclonal Antibody
<b>Host</b>	Rabbit
<b>Application</b>	WB
<b>Reactivity</b>	Human,Mouse

## Performance

<b>Conjugation</b>	Unconjugated
<b>Modification</b>	Unmodified
<b>Isotype</b>	IgG
<b>Clonality</b>	Polyclonal
<b>Form</b>	Liquid
<b>Storage</b>	Store at 4°C short term. Aliquot and store at -20°C long term. Avoid freeze/thaw cycles.
<b>Buffer</b>	Liquid in PBS containing 50% glycerol, 0.5% BSA and 0.02% New type preservative N.
<b>Purification</b>	Affinity purification

## Immunogen

<b>Gene Name</b>	IRX1
<b>Alternative Names</b>	IRX1; IRXA1; Iroquois-class homeodomain protein IRX-1; Homeodomain protein IRXA1; Iroquois homeobox protein 1
<b>Gene ID</b>	79192.0
<b>SwissProt ID</b>	P78414.The antiserum was produced against synthesized peptide derived from human IRX1. AA range:221-270

## Application

<b>Dilution Ratio</b>	WB 1:500-1:2000. ELISA: 1:40000.
<b>Molecular Weight</b>	47kD

## Background

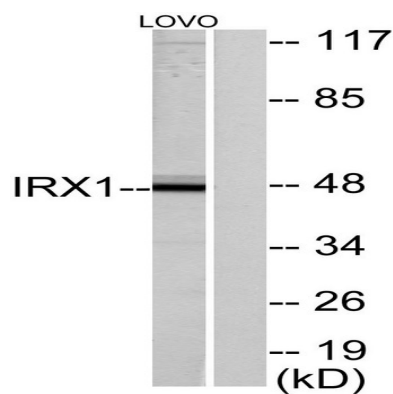
**Product Name: IRX1 Rabbit Polyclonal Antibody**  
**Catalog #: APRab12763**



This gene encodes a member of the Iroquois homeobox protein family. Homeobox genes in this family are involved in pattern formation in the embryo. The gene product has been identified as a tumor suppressor in gastric (PMID: 21602894, 20440264) and head and neck cancers (PMID: 18559491). A pseudogene of this gene is located on chromosome 13. [provided by RefSeq, Dec 2011],similarity:Belongs to the TALE/IRO homeobox family.,similarity:Contains 1 homeobox DNA-binding domain.,

## Research Area

## Image Data



Western blot analysis of lysates from LOVO cells, using IRX1 Antibody. The lane on the right is blocked with the synthesized peptide.

## Note

For research use only.