

Product Name: IRS2 Rabbit Polyclonal Antibody
Catalog #: APRab12761



Summary

Production Name	IRS2 Rabbit Polyclonal Antibody
Description	Rabbit Polyclonal Antibody
Host	Rabbit
Application	WB
Reactivity	Human,Rat,Mouse

Performance

Conjugation	Unconjugated
Modification	Unmodified
Isotype	IgG
Clonality	Polyclonal
Form	Liquid
Storage	Store at 4°C short term. Aliquot and store at -20°C long term. Avoid freeze/thaw cycles.
Buffer	Liquid in PBS containing 50% glycerol, 0.5% BSA and 0.02% New type preservative N.
Purification	Affinity purification

Immunogen

Gene Name	IRS2
Alternative Names	IRS2
Gene ID	8660.0
SwissProt ID	Q9Y4H2.Synthetic peptide from human protein at AA range: 660-700

Application

Dilution Ratio	WB 1:500-2000, ELISA 1:10000-20000
Molecular Weight	170kD

Background

This gene encodes the insulin receptor substrate 2, a cytoplasmic signaling molecule that mediates effects of insulin, insulin-like growth factor 1, and other cytokines by acting as a molecular adaptor between diverse receptor tyrosine kinases

Product Name: IRS2 Rabbit Polyclonal Antibody
Catalog #: APRab12761

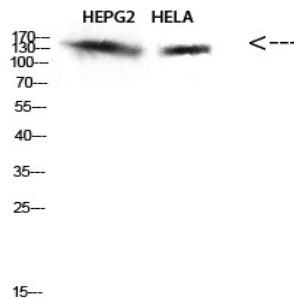


and downstream effectors. The product of this gene is phosphorylated by the insulin receptor tyrosine kinase upon receptor stimulation, as well as by an interleukin 4 receptor-associated kinase in response to IL4 treatment. [provided by RefSeq, Jul 2008],function:May mediate the control of various cellular processes by insulin.,PTM:Phosphorylated upon DNA damage, probably by ATM or ATR.,similarity:Contains 1 IRS-type PTB domain.,similarity:Contains 1 PH domain.,

Research Area

Neurotrophin;Insulin_Receptor;Adipocytokine;Type II diabetes mellitus;Aldosterone-regulated sodium reabsorption;

Image Data



Western Blot analysis of HEPG2, HELA cells using Antibody diluted at 500. Secondary antibody was diluted at 1:20000

Note

For research use only.