

Product Name: IRF-1 Rabbit Polyclonal Antibody
Catalog #: APRab12737



Summary

Production Name	IRF-1 Rabbit Polyclonal Antibody
Description	Rabbit Polyclonal Antibody
Host	Rabbit
Application	WB
Reactivity	Human,Mouse,Rat

Performance

Conjugation	Unconjugated
Modification	Unmodified
Isotype	IgG
Clonality	Polyclonal
Form	Liquid
Storage	Store at 4°C short term. Aliquot and store at -20°C long term. Avoid freeze/thaw cycles.
Buffer	Liquid in PBS containing 50% glycerol, 0.5% BSA and 0.02% New type preservative N.
Purification	Affinity purification

Immunogen

Gene Name	IRF1
Alternative Names	IRF1; Interferon regulatory factor 1; IRF-1
Gene ID	3659.0
SwissProt ID	P10914.The antiserum was produced against synthesized peptide derived from the Internal region of human IRF1. AA range:91-140

Application

Dilution Ratio	WB 1:500-2000 ELISA 2000-20000
Molecular Weight	36kD

Background

IRF1 encodes interferon regulatory factor 1, a member of the interferon regulatory transcription factor (IRF) family. IRF1

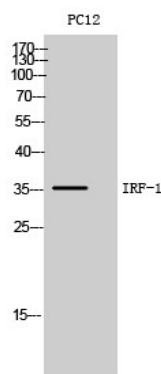
Product Name: IRF-1 Rabbit Polyclonal Antibody
Catalog #: APRab12737



serves as an activator of interferons alpha and beta transcription, and in mouse it has been shown to be required for double-stranded RNA induction of these genes. IRF1 also functions as a transcription activator of genes induced by interferons alpha, beta, and gamma. Further, IRF1 has been shown to play roles in regulating apoptosis and tumor-suppression. [provided by RefSeq, Jul 2008],disease:Deletion or rearrangement of IRF1 are a cause of preleukemic myelodysplastic syndrome (MDS) and of acute myelogenous leukemia (AML),function:Specifically binds to the upstream regulatory region of type I IFN and IFN-inducible MHC class I genes (the interferon consensus sequence (ICS)) and activates those genes. Acts as a tumor suppressor.,induction:By viruses and IFN.,PTM:Sumoylation represses the transcriptional activity and displays enhanced resistance to protein degradation. Inactivates the tumor suppressor activity. Elevated levels in tumor cells. Major site is Lys-275. Sumoylation is enhanced by PIAS3 (By similarity). Desumoylated by SENP1 in tumor cells and appears to compete with ubiquitination on C-terminal sites.,PTM:Ubiquitinated. Appears to compete with sumoylation on C-terminal sites.,similarity:Belongs to the IRF family.,similarity:Contains 1 tryptophan pentad repeat DNA-binding domain.,

Research Area

Image Data



Western Blot analysis of PC12 cells using IRF-1 Polyclonal Antibody.. Secondary antibody was diluted at 1:20000 cells nucleus extracted by Minute TM Cytoplasmic and Nuclear Fractionation kit (SC-003, Invent biotech, MN, USA) .

Note

For research use only.