

Summary

| | |
|------------------------|----------------------------------|
| Production Name | INSL5 Rabbit Polyclonal Antibody |
| Description | Rabbit Polyclonal Antibody |
| Host | Rabbit |
| Application | WB |
| Reactivity | Human,Mouse |

Performance

| | |
|---------------------|--|
| Conjugation | Unconjugated |
| Modification | Unmodified |
| Isotype | IgG |
| Clonality | Polyclonal |
| Form | Liquid |
| Storage | Store at 4°C short term. Aliquot and store at -20°C long term. Avoid freeze/thaw cycles. |
| Buffer | Liquid in PBS containing 50% glycerol, and 0.02% New type preservative N. |
| Purification | Affinity purification |

Immunogen

| | |
|--------------------------|---|
| Gene Name | INSL5 UNQ156/PRO182 |
| Alternative Names | |
| Gene ID | 10022.0 |
| SwissProt ID | Q9Y5Q6.Synthesized peptide derived from human protein . at AA range: 30-110 |

Application

| | |
|-------------------------|----------------------------------|
| Dilution Ratio | WB 1:500-2000 ELISA 1:5000-20000 |
| Molecular Weight | 14kD |

Background

The protein encoded by this gene contains a classical signature of the insulin superfamily and is highly similar to relaxin 3 (RLN3/INSL7). [provided by RefSeq, Jul 2008],function:May have a role in gut contractility or in thymic development and

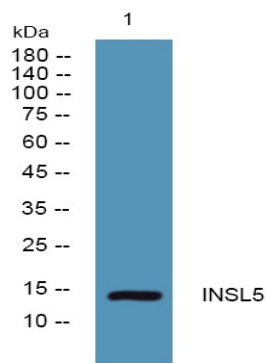
Product Name: INSL5 Rabbit Polyclonal Antibody
Catalog #: APRab12626



regulation.,similarity:Belongs to the insulin family.,subunit:Heterodimer of a B chain and an A chain linked by two disulfide bonds.,tissue specificity:Highly expressed in rectum with lower levels in uterus and ascending and descending colon.,

Research Area

Image Data



Western blot analysis of lysates from K562 cells, primary antibody was diluted at 1:1000, 4° over night

Note

For research use only.