

---

## Summary

<b>Production Name</b>	INSL4 Rabbit Polyclonal Antibody
<b>Description</b>	Rabbit Polyclonal Antibody
<b>Host</b>	Rabbit
<b>Application</b>	IF, WB, IHC
<b>Reactivity</b>	Human, Rat, Mouse

## Performance

<b>Conjugation</b>	Unconjugated
<b>Modification</b>	Unmodified
<b>Isotype</b>	IgG
<b>Clonality</b>	Polyclonal
<b>Form</b>	Liquid
<b>Storage</b>	Store at 4°C short term. Aliquot and store at -20°C long term. Avoid freeze/thaw cycles.
<b>Buffer</b>	Liquid in PBS containing 50% glycerol, 0.5% BSA and 0.02% New type preservative N.
<b>Purification</b>	Affinity purification

## Immunogen

<b>Gene Name</b>	INSL4
<b>Alternative Names</b>	INSL4; Early placenta insulin-like peptide; EPIL; Insulin-like peptide 4; Placentin
<b>Gene ID</b>	3641.0
<b>SwissProt ID</b>	Q14641. The antiserum was produced against synthesized peptide derived from human INSL4. AA range:41-90

## Application

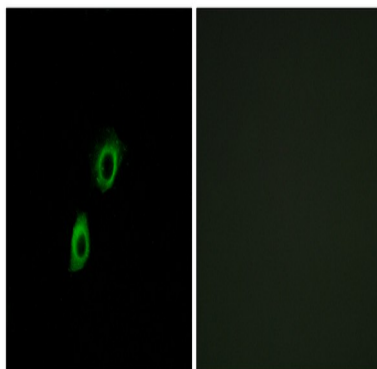
<b>Dilution Ratio</b>	WB 1:500 - 1:2000. IHC 1:100 - 1:300. IF 1:200 - 1:1000. ELISA: 1:20000. Not yet tested in other applications.
<b>Molecular Weight</b>	19kD

## Background

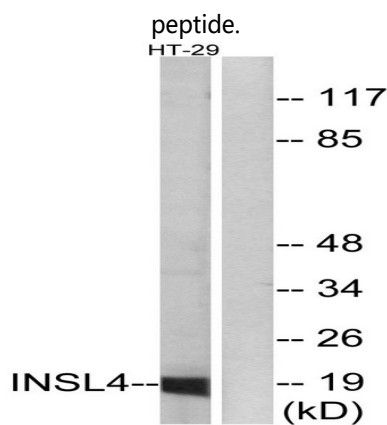
INSL4 encodes the insulin-like 4 protein, a member of the insulin superfamily. INSL4 encodes a precursor that undergoes post-translational cleavage to produce 3 polypeptide chains, A-C, that form tertiary structures composed of either all three chains, or just the A and B chains. Expression of INSL4 products occurs within the early placental cytotrophoblast and syncytiotrophoblast. [provided by RefSeq, Jul 2008],developmental stage:Highly expressed in the early placenta. Expression of epil peptides in the villous cytotrophoblast is different from that displayed by the syncytiotrophoblast. In fetal tissues it was identified in the perichondrium of all four limbs, vertebrae, and ribs. It was abundant in interbone ligaments.,function:May play an important role in trophoblast development and in the regulation of bone formation.,similarity:Belongs to the insulin family.,tissue specificity:Expressed in placenta, uterus and in fetal perichondrium. Expression levels were increased in both early placentas and molar pregnancies and were reduced in choriocarcinoma cells.,

## Research Area

## Image Data

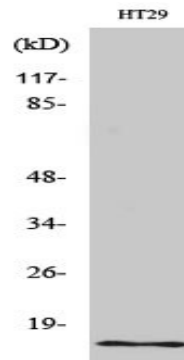


Immunofluorescence analysis of A549 cells, using INSL4 Antibody. The picture on the right is blocked with the synthesized

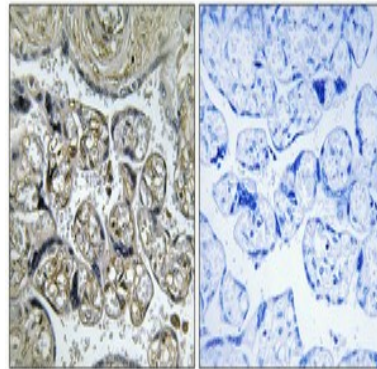


Western blot analysis of lysates from HT-29 cells, using INSL4 Antibody. The lane on the right is blocked with the synthesized peptide.

**Product Name: INSL4 Rabbit Polyclonal Antibody**  
**Catalog #: APRab12625**



Western Blot analysis of various cells using INSL4 Polyclonal Antibody



Immunohistochemical analysis of paraffin-embedded Human placenta. Antibody was diluted at 1:100 (4°, overnight) . High-pressure and temperature Tris-EDTA, pH 8.0 was used for antigen retrieval. Negative control (right) obtained from antibody was pre-absorbed by immunogen peptide.

## **Note**

For research use only.