

Product Name: Inhibin β -B Rabbit Polyclonal Antibody
Catalog #: APRab12614



Summary

Production Name	Inhibin β -B Rabbit Polyclonal Antibody
Description	Rabbit Polyclonal Antibody
Host	Rabbit
Application	WB,IHC,ELISA
Reactivity	Human,Mouse,Rat

Performance

Conjugation	Unconjugated
Modification	Unmodified
Isotype	IgG
Clonality	Polyclonal
Form	Liquid
Storage	Store at 4°C short term. Aliquot and store at -20°C long term. Avoid freeze/thaw cycles.
Buffer	Liquid in PBS containing 50% glycerol, 0.5% BSA and 0.02% New type preservative N.
Purification	Affinity purification

Immunogen

Gene Name	INHBB
Alternative Names	INHBB; Inhibin beta B chain; Activin beta-B chain
Gene ID	3625.0
SwissProt ID	P09529.Synthesized peptide derived from Inhibin beta B chain at AA range: 351-400

Application

Dilution Ratio	WB 1:500 - 1:2000. IHC: 1:100-1:300. ELISA: 1:20000..
Molecular Weight	45kD

Background

This gene encodes a member of the TGF-beta (transforming growth factor-beta) superfamily of proteins. The encoded

Product Name: Inhibin β -B Rabbit Polyclonal Antibody
Catalog #: APRab12614

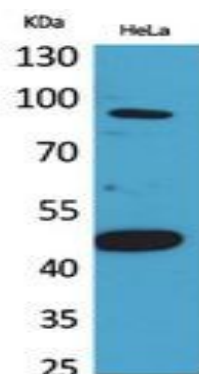


preproprotein is proteolytically processed to generate a subunit of the dimeric activin and inhibin protein complexes. These complexes activate and inhibit, respectively, follicle stimulating hormone secretion from the pituitary gland. Polymorphisms near this gene are associated with pre-eclampsia in female human patients. [provided by RefSeq, Aug 2016],function:Inhibins and activins inhibit and activate, respectively, the secretion of follitropin by the pituitary gland. Inhibins/activins are involved in regulating a number of diverse functions such as hypothalamic and pituitary hormone secretion, gonadal hormone secretion, germ cell development and maturation, erythroid differentiation, insulin secretion, nerve cell survival, embryonic axial development or bone growth, depending on their subunit composition. Inhibins appear to oppose the functions of activins.,online information:Inhibin entry,similarity:Belongs to the TGF-beta family.,subunit:Dimeric, linked by one or more disulfide bonds. Inhibin A is a dimer of alpha and beta-A. Inhibin B is a dimer of alpha and beta-B. Activin A is a homodimer of beta-A. Activin B is a homodimer of beta-B. Activin AB is a dimer of beta-A and beta-B.,

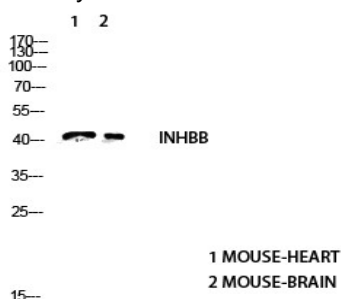
Research Area

Cytokine-cytokine receptor interaction;TGF-beta;

Image Data



Western Blot analysis of HeLa cells using Inhibin β -B Polyclonal Antibody. Antibody was diluted at 1:2000. Secondary antibody was diluted at 1:20000

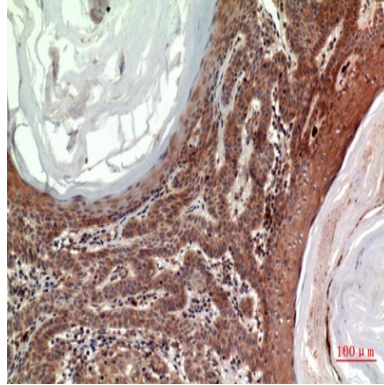


Western blot analysis of BD-PT5408wb4147442094 lysis using INHBB Antibody antibody. Antibody was diluted at 1:2000.

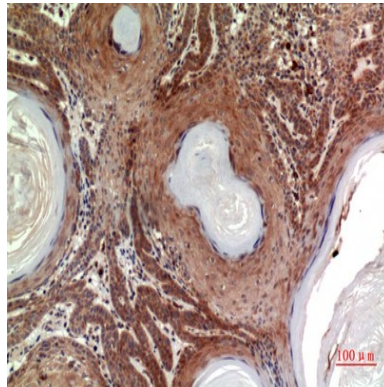
Product Name: Inhibin β -B Rabbit Polyclonal Antibody
Catalog #: APRab12614



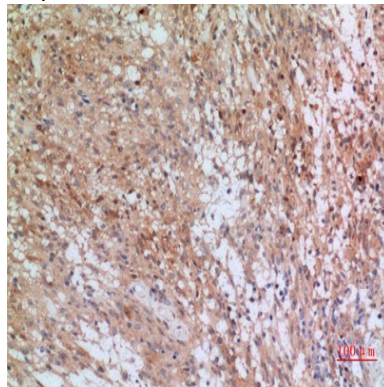
Secondary antibody was diluted at 1:20000



Immunohistochemical analysis of paraffin-embedded human-skin, antibody was diluted at 1:100



Immunohistochemical analysis of paraffin-embedded human-skin, antibody was diluted at 1:100



Immunohistochemical analysis of paraffin-embedded human-brain, antibody was diluted at 1:100

Note

For research use only.