
Summary

Production Name	IL-33 Rabbit Polyclonal Antibody
Description	Rabbit Polyclonal Antibody
Host	Rabbit
Application	WB,IHC,
Reactivity	Human,Rat,Mouse

Performance

Conjugation	Unconjugated
Modification	Unmodified
Isotype	IgG
Clonality	Polyclonal
Form	Liquid
Storage	Store at 4°C short term. Aliquot and store at -20°C long term. Avoid freeze/thaw cycles.
Buffer	Liquid in PBS containing 50% glycerol, 0.5% BSA and 0.02% New type preservative N.
Purification	Affinity purification

Immunogen

Gene Name	IL33
Alternative Names	IL33; C9orf26; IL1F11; NFHEV; Interleukin-33; IL-33; Interleukin-1 family member 11; IL-1F11; Nuclear factor from high endothelial venules; NF-HEV
Gene ID	90865.0
SwissProt ID	O95760.The antiserum was produced against synthesized peptide derived from the Internal region of human IL33. AA range:121-170

Application

Dilution Ratio	WB 1:500 - 1:2000 IHC 1:100 - 1:300. ELISA: 1:20000..
Molecular Weight	31kD

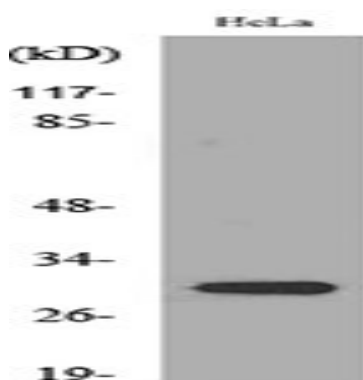
Background

The protein encoded by this gene is a cytokine that binds to the IL1RL1/ST2 receptor. The encoded protein is involved in the maturation of Th2 cells and the activation of mast cells, basophils, eosinophils and natural killer cells. Several transcript variants encoding different isoforms have been found for this gene. [provided by RefSeq, Sep 2015],caution:Was originally (PubMed:12819012) thought to one of the key factors that controls the specialized post-capillary high endothelial venules (HEV) phenotype found in organized secondary lymphoid tissue and to be nuclear localized.,function:Cytokine that binds to and signals through IL1RL1/ST2 and its stimulation recruits MYD88, IRAK1, IRAK4, and TRAF6, followed by phosphorylation of MAPK3/ERK1 and/or MAPK1/ERK2, MAPK14, and MAPK8. Induces T helper type 2-associated cytokines.,PTM:Proteolytically converted to a mature form by CASP1.,similarity:Belongs to the IL-1 family. Highly divergent.,tissue specificity:Expressed at high level in high endothelial venules found in tonsils, Peyer patches and mesenteric lymph nodes. Almost undetectable in placenta.,

Research Area

Cytosolic DNA-sensing pathway;

Image Data

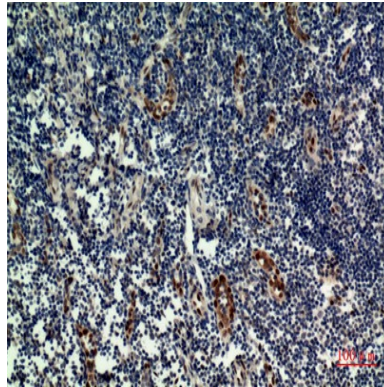


Western blot analysis of lysate from HeLa cells, using IL33 Antibody.

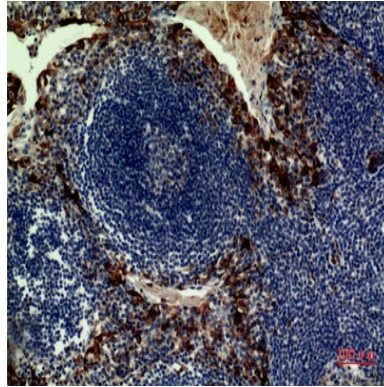


Western Blot analysis of HeLa cells using IL-33 Polyclonal Antibody.. Secondary antibody was diluted at 1:20000

Product Name: IL-33 Rabbit Polyclonal Antibody
Catalog #: APRab12554



Immunohistochemical analysis of paraffin-embedded human-tonsilla, antibody was diluted at 1:100



Immunohistochemical analysis of paraffin-embedded human-tonsilla, antibody was diluted at 1:100

Note

For research use only.